

A first look at some new UHRS* data acquired in 2024 over the Tonn Nua area in the Celtic Sea

Peter Croker, The M Horizon (UK) Limited, November 2024

(*Ultra High Resolution Seismic)

References

Government of Ireland (2024) Geophysical data for Tonn Nua offshore wind auction, DECC, 7 November 2024.

Note

Contains Irish Public Sector Data (Offshore, Environment and Future Development, Department of the Environment, Climate and Communications) licensed under a Creative Commons Attribution 4.0 International (CC BY 4.0) licence.

Table Of Contents

Layers

- IRL_CS_Designated Area
- Draft_SC_DMAP_Maritime_Areas_WGS84
- SC_DMAP_Proposal_Boundary_WGS84
- INFOMAR_Bathymetry_10m_Inshore TIFF_April_2024.tif
- INFOMAR_Backscatter_10m_Inshore TIFF_April_2024.tif
- MPAAG_draft_Celtic_Sea_MPA_zones_9_11
- MPAAG_draft_Celtic_Sea_MPA_zones_3_8
- MPAAG_draft_Celtic_Sea_MPA_zones_1_4
- NPWS_SPA_ITM_2023_05
- NPWS_SPA_ITM_2024_01_Marine
- NPWS_SAC_ITM_2024_05
- NPWS_SAC_Offshore_WGS84_2022_11
- Vessel_density_all_2022.tif
- Route_density_all_2022.tif
- Route_density_all_2023.tif
- INFOMAR_MBES_Tracklines_January_2023
- INFOMAR_SBP_Tracklines_February_2022
- INFOMAR_Seabed_Survey_Coverage_January_2023
- INFOMAR_Seabed_Classification_May_2022
- EirGrid_Cork_Foreshore_Licence
- EirGrid_Waterford_Foreshore_Licence
- Marine_Traffic_Zone_Cork_Harbour
- Marine_Traffic_Zone_Waterford_Harbour
- Corridor_Transit_Survey_Area
- Broad_Geophysical_Target_Survey_Area
- MPAAG_2024_Celtic_Sea_Fig1A.png
- MPAAG_2024_Celtic_Sea_Fig1B.png
- DHLGH_Windfarm_Licence_Polygons_April_2021_BFLOW
- DHLGH_Windfarm_Licence_Polygons_April_2021_FLOW
- EMODNet_Geomorph_poly
- EMODNet_QuaternaryGeology_Europe_V03_poly
- EMODNet_preQuaternaryGeology_Europe_V01_poly
- EMODNet_Seabed_substrate_Multiscale_October2020_250k
- EMODNet_Seabed_substrate_Multiscale_October2020_1M
- EMODNet_preQuaternaryGeology_Europe_v02_line
- EMODnet_2022_Bathymetry_Contours
- OSPAR_threatened_and/or_declining_habitats
- Celtic_Sea_FLOW_pipeline_MRIA_April_2023
- Ireland_FLOW_AOI
- GeoPartners_NCS15_Irish_sector_lines
- IRL_Current_Authorisations_Sept2022
- IRL_3D_Seismic_Surveys_1982-2017
- IRL_2D_Seismic_Surveys_1965-2017
- IRL_wells_1970_2019
- OGA_Wells_WGS84 Feb 2019
- Source data
- Coastline
- World_EEZ
- Basemap

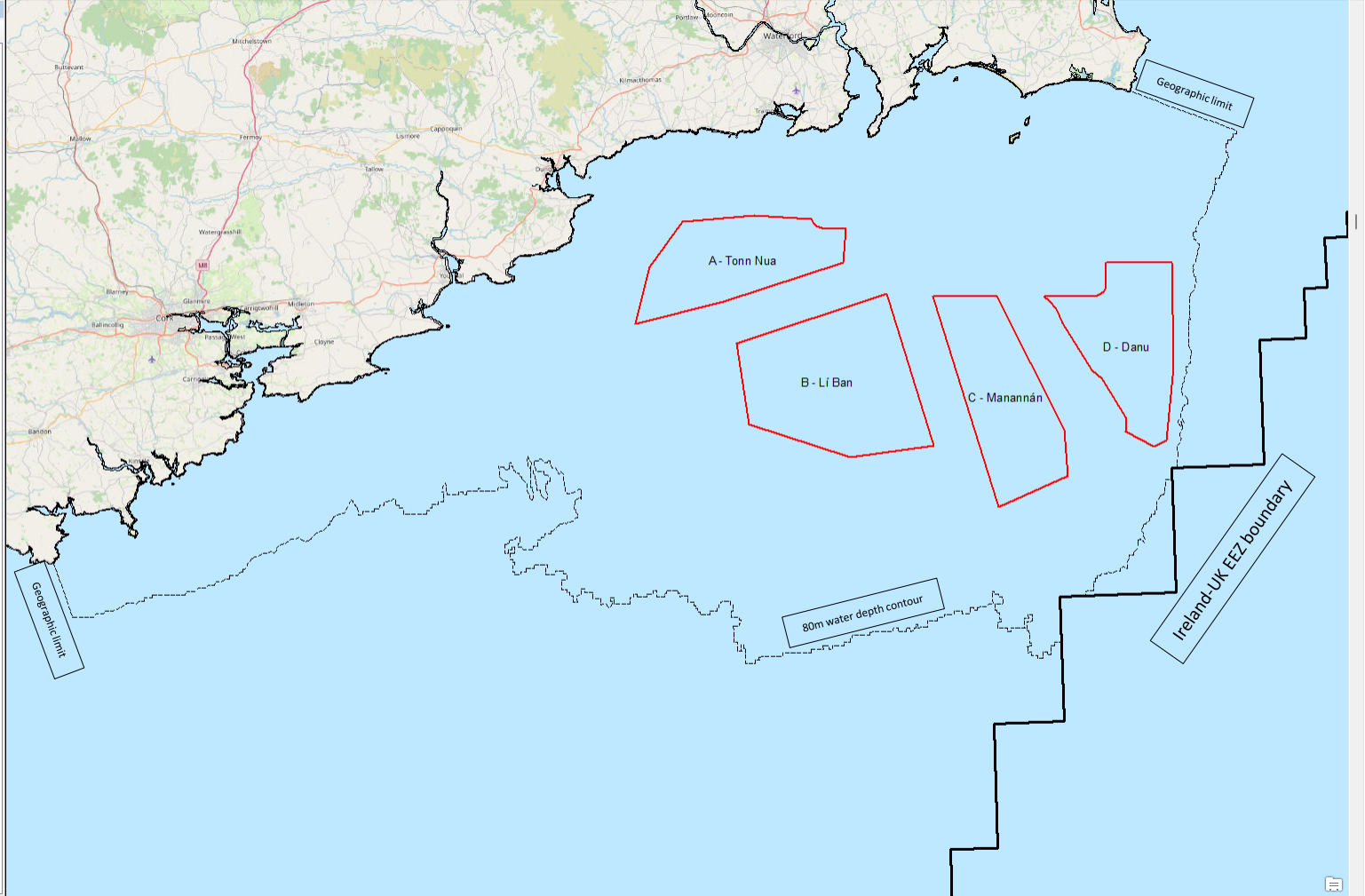


Table Of Contents

- Layers
 - TC24016_UHRS_tracklines
 - TC24016_SBP_tracklines
 - TC24016_MBES_ML
 - TC24016_MBES_XL
 - IRL_CS_Designated Area
 - Proposed_Licence_Area_20Feb2024_MI_WGS84_UTM29N
 - MPAAG_draft_Celtic_Sea_MPA_zones_9_11
 - MPAAG_draft_Celtic_Sea_MPA_zones_5_8
 - MPAAG_draft_Celtic_Sea_MPA_zones_1_4
 - Draft_SC_DMAP_Maritime_Areas_WGS84
 - SC_DMAP_Proposal_Boundary_WGS84
 - Vessel_density_all_2022.tif
 - Route_density_all_2022.tif
 - Route_density_all_2023.tif
 - INFOMAR_Bathymetry_10m_Inshore_TIFF_April_2024.tif
 - INFOMAR_Backscatter_10m_Inshore_TIFF_April_2024.tif
 - INFOMAR_MBES_Tracklines_January_2023
 - INFOMAR_SBP_Tracklines_February_2022
 - INFOMAR_Seabed_Survey_Coverage_January_2023
 - INFOMAR_Seabed_Classification_May_2022
 - EirGrid_Cork_Foreshore_Licence
 - EirGrid_Waterford_Foreshore_Licence
 - Marine_Traffic_Zone_Cork_Harbour
 - Marine_Traffic_Zone_Waterford_Harbour
 - Corridor_Transit_Survey_Area
 - Broad_Geophysical_Target_Survey_Area
 - MPAAG_2024_Celtic_Sea_Fig1A.png
 - MPAAG_2024_Celtic_Sea_Fig1B.png
 - NPWS_SPA_ITM_2023_05
 - NPWS_SPA_ITM_2024_01_Marine
 - NPWS_SAC_ITM_2024_05
 - NPWS_SAC_Offshore_WGS84_2022_11
 - DHLGH_Windfarm_Licence_Polygons_April_2021_BFLOW
 - DHLGH_Windfarm_Licence_Polygons_April_2021_FLOW
 - EMODNet_Geomorph_poly
 - EMODNet_QuaternaryGeology_Europe_V03_poly
 - EMODNet_preQuaternaryGeology_Europe_V01_poly
 - EMODnet_Seabed_substrate_Multiscale_October2020_250
 - EMODnet_Seabed_substrate_Multiscale_October2020_1M
 - EMODNet_preQuaternaryGeology_Europe_v02_line
 - EMODnet_2022_Bathymetry_Contours
 - OSPAR_threatened_and/or_declining_habitats
 - Celtic_Sea_FLOW_pipeline_MRIA_April_2023
 - Ireland_FLOW_AOI
 - GeoPartners_NCS15_Irish_sector_lines
 - IRL_Current_Authorisations_Sept2022
 - IRL_3D_Seismic_Surveys_1982-2017
 - IRL_2D_Seismic_Surveys_1965-2017
 - IRL_wells_1970_2019
 - OGA_Wells_WGS84_Feb_2019
 - Source data

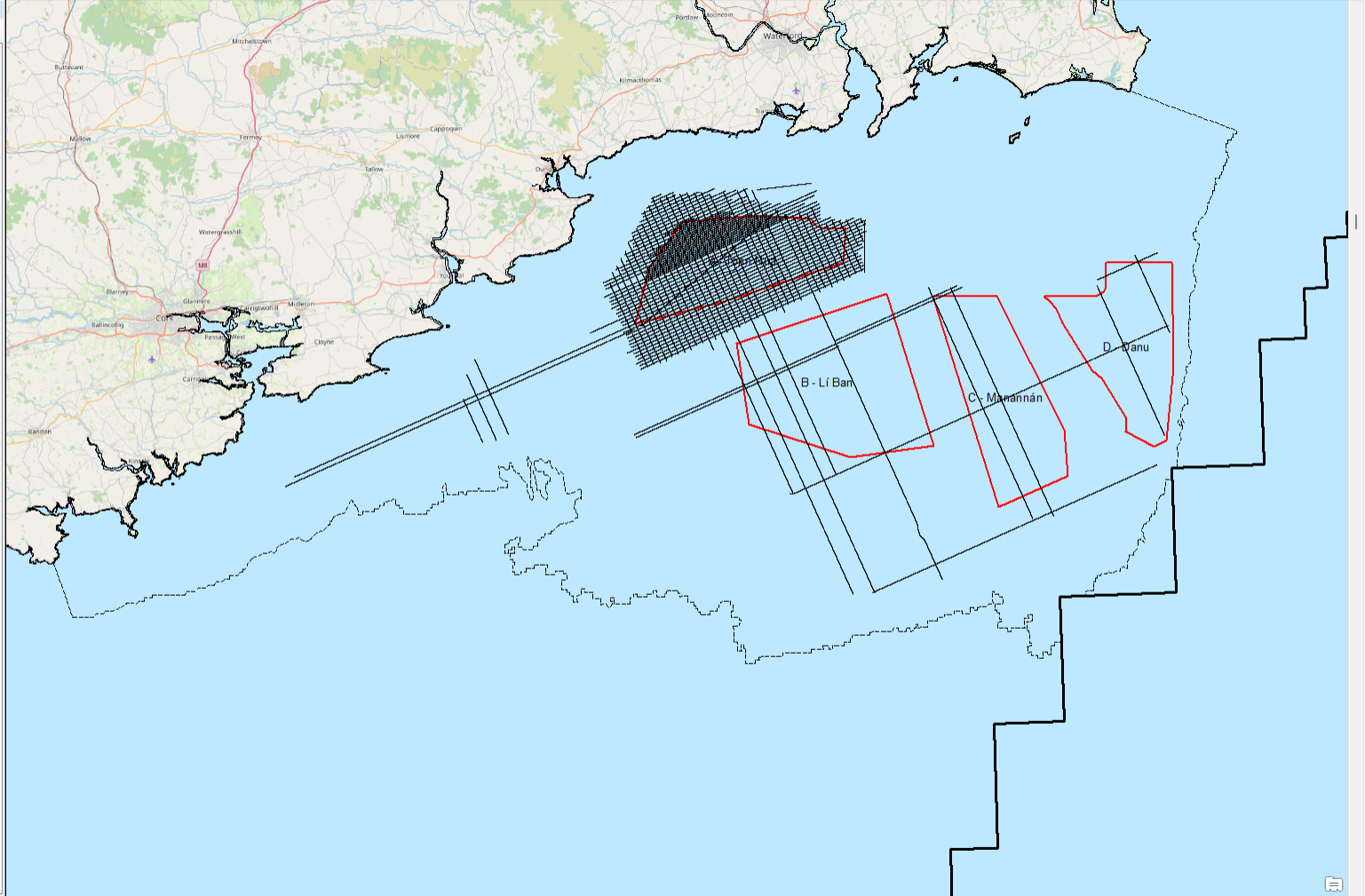
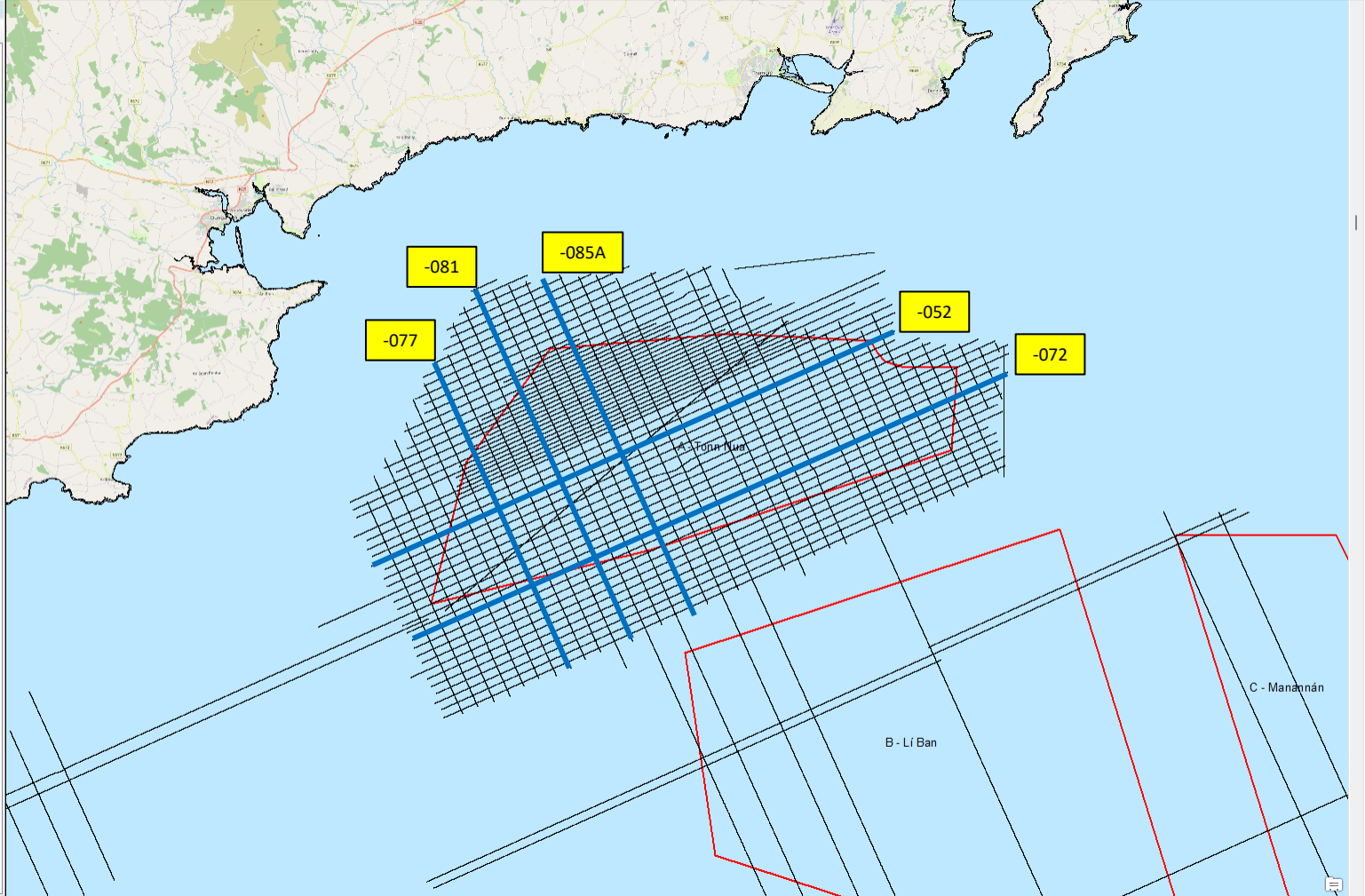
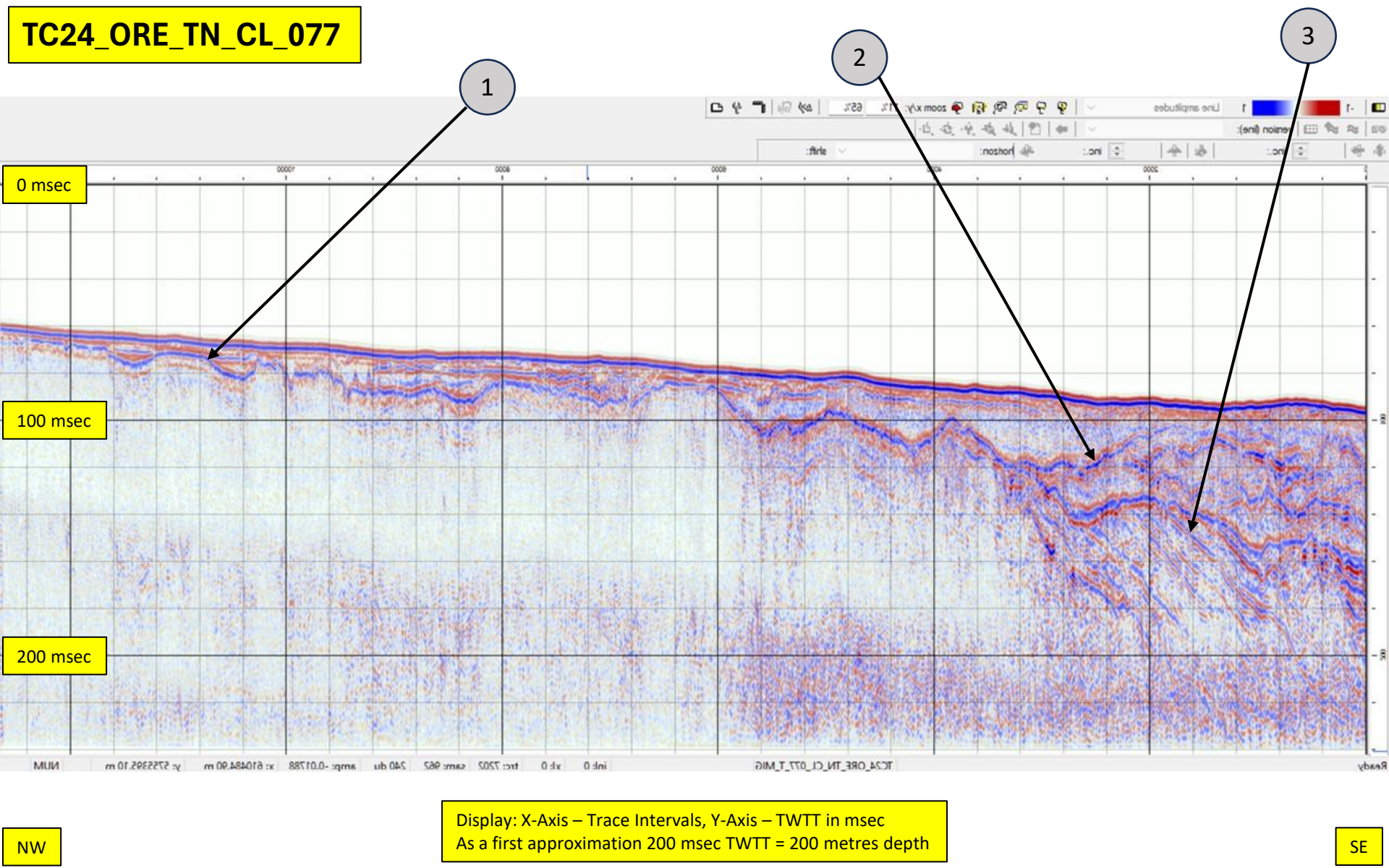


Table Of Contents

- Layers
 - TC24016_UHRS_tracklines
 - IRL_CS_Designated Area
 - Proposed_Licence_Area_20Feb2024_MI_WGS84_UTM29N
 - MPAAG_draft_Celtic_Sea_MPA_zones_9_11
 - MPAAG_draft_Celtic_Sea_MPA_zones_5_8
 - MPAAG_draft_Celtic_Sea_MPA_zones_1_4
 - Draft_SC_DMAP_Maritime_Areas_WGS84
 - SC_DMAP_Proposal_Boundary_WGS84
 - Vessel_density_all_2022.tif
 - Route_density_all_2022.tif
 - Route_density_all_2023.tif
 - INFOMAR_Bathymetry_10m_Inshore_TIFF_April_2024.tif
 - INFOMAR_Backscatter_10m_Inshore_TIFF_April_2024.tif
 - INFOMAR_MBES_Tracklines_January_2023
 - INFOMAR_SBP_Tracklines_February_2022
 - INFOMAR_Seabed_Survey_Coverage_January_2023
 - INFOMAR_Seabed_Classification_May_2022
 - EirGrid_Cork_Foreshore_Licence
 - EirGrid_Waterford_Foreshore_Licence
 - Marine_Traffic_Zone_Cork_Harbour
 - Marine_Traffic_Zone_Waterford_Harbour
 - Corridor_Transit_Survey_Area
 - Broad_Geophysical_Target_Survey_Area
 - MPAAG_2024_Celtic_Sea_Fig1A.png
 - MPAAG_2024_Celtic_Sea_Fig1B.png
 - NPWS_SPA_ITM_2023_05
 - NPWS_SPA_ITM_2024_01_Marine
 - NPWS_SAC_ITM_2024_05
 - NPWS_SAC_Offshore_WGS84_2022_11
 - DHLGH_Windfarm_Licence_Polygons_April_2021_BFOW
 - DHLGH_Windfarm_Licence_Polygons_April_2021_FLOW
 - EMODNet_Geomorph_poly
 - EMODNet_QuaternaryGeology_Europe_V03_poly
 - EMODNet_preQuaternaryGeology_Europe_V01_poly
 - EMODnet_Seabed_substrate_Multiscale_October2020_250k
 - EMODnet_Seabed_substrate_Multiscale_October2020_TM
 - EMODNet_preQuaternaryGeology_Europe_v02_line
 - EMODnet_2022_Bathymetry_Contours
 - OSPAR_threatened_and/or_declining_habitats
 - Celtic_Sea_FLOW_pipeline_MRIA_April_2023
 - Ireland_FLOW_AOI
 - GeoPartners_NCS15_Irish_sector_lines
 - IRL_Current_Authorisations_Sept2022
 - IRL_3D_Seismic_Surveys_1982-2017
 - IRL_2D_Seismic_Surveys_1965-2017
 - IRL_wells_1970_2019
 - OGA_Wells_WGS84_Feb_2019
 - Source data
 - Coastline
 - World_EEZ
 - Basemap



TC24_ORE_TN_CL_077



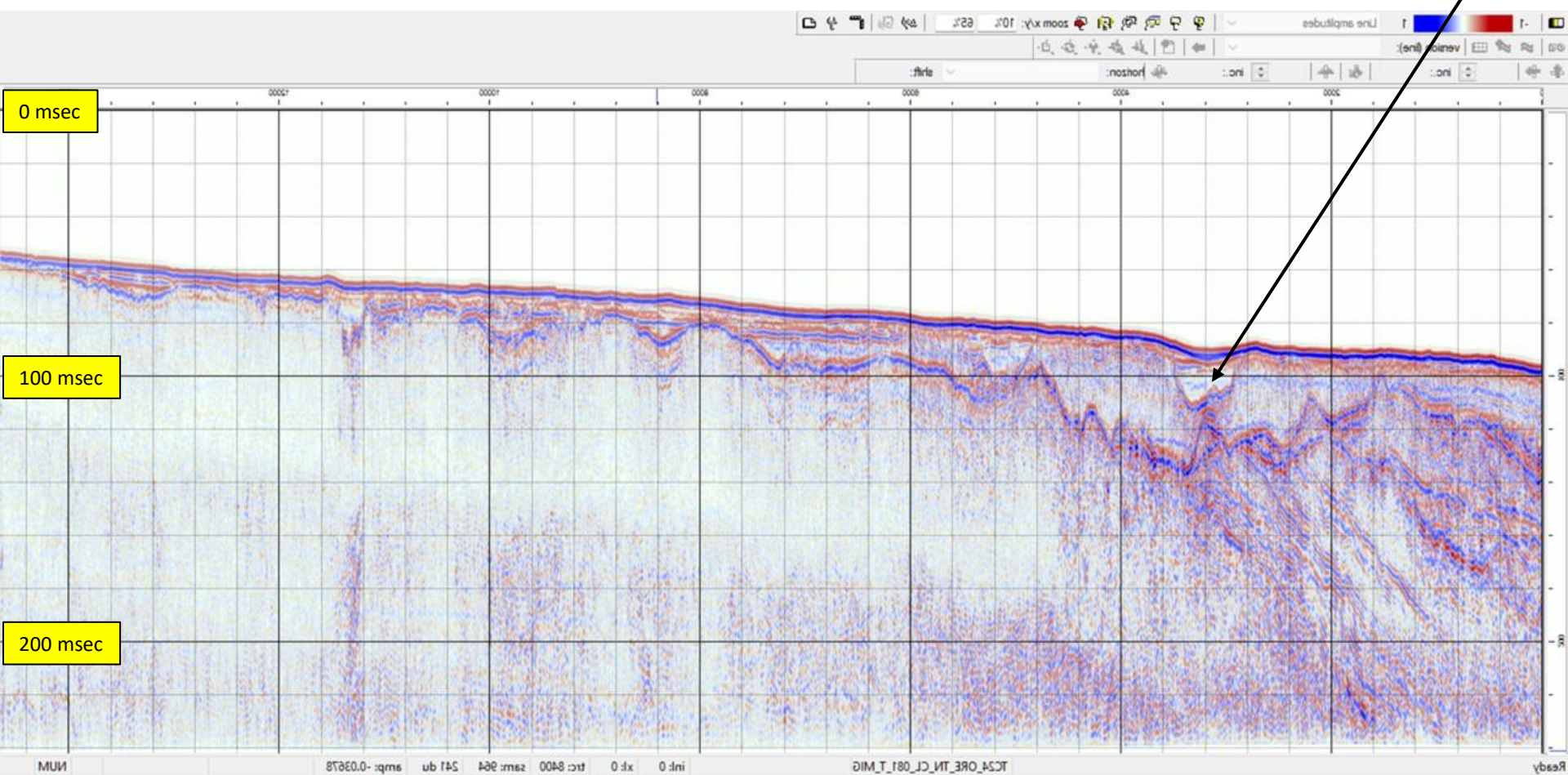
Display: X-Axis – Trace Intervals, Y-Axis – TWTT in msec
As a first approximation 200 msec TWTT = 200 metres depth

NW

SE

TC24_ORE_TN_CL_081

4



0 msec

100 msec

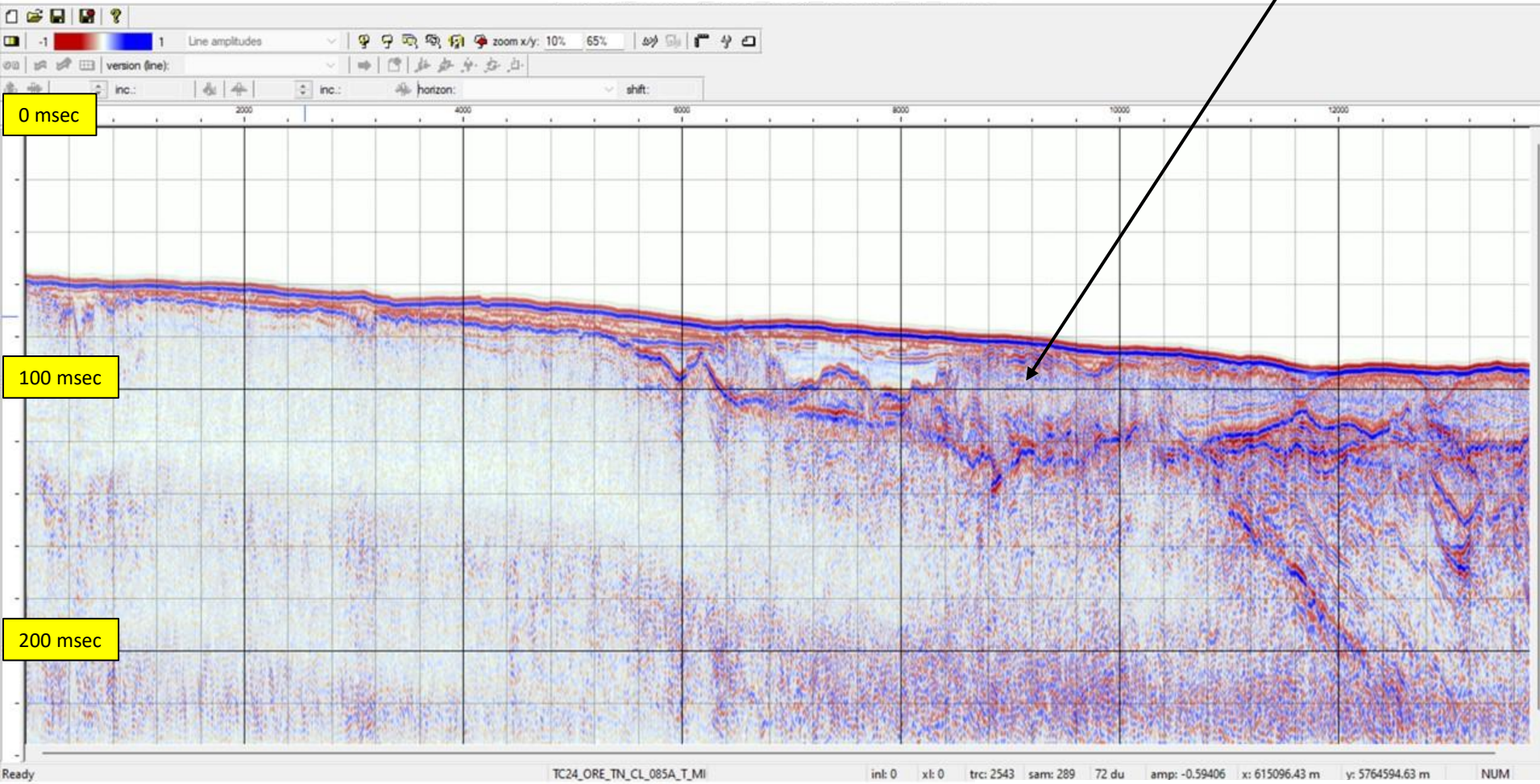
200 msec

NW

SE

TC24_ORE_TN_CL_085A

5



0 msec

100 msec

200 msec

Ready TC24_ORE_TN_CL_085A_T_MI inl: 0 xl: 0 trc: 2543 sam: 289 72 du amp: -0.59406 x: 615096.43 m y: 5764594.63 m NUM

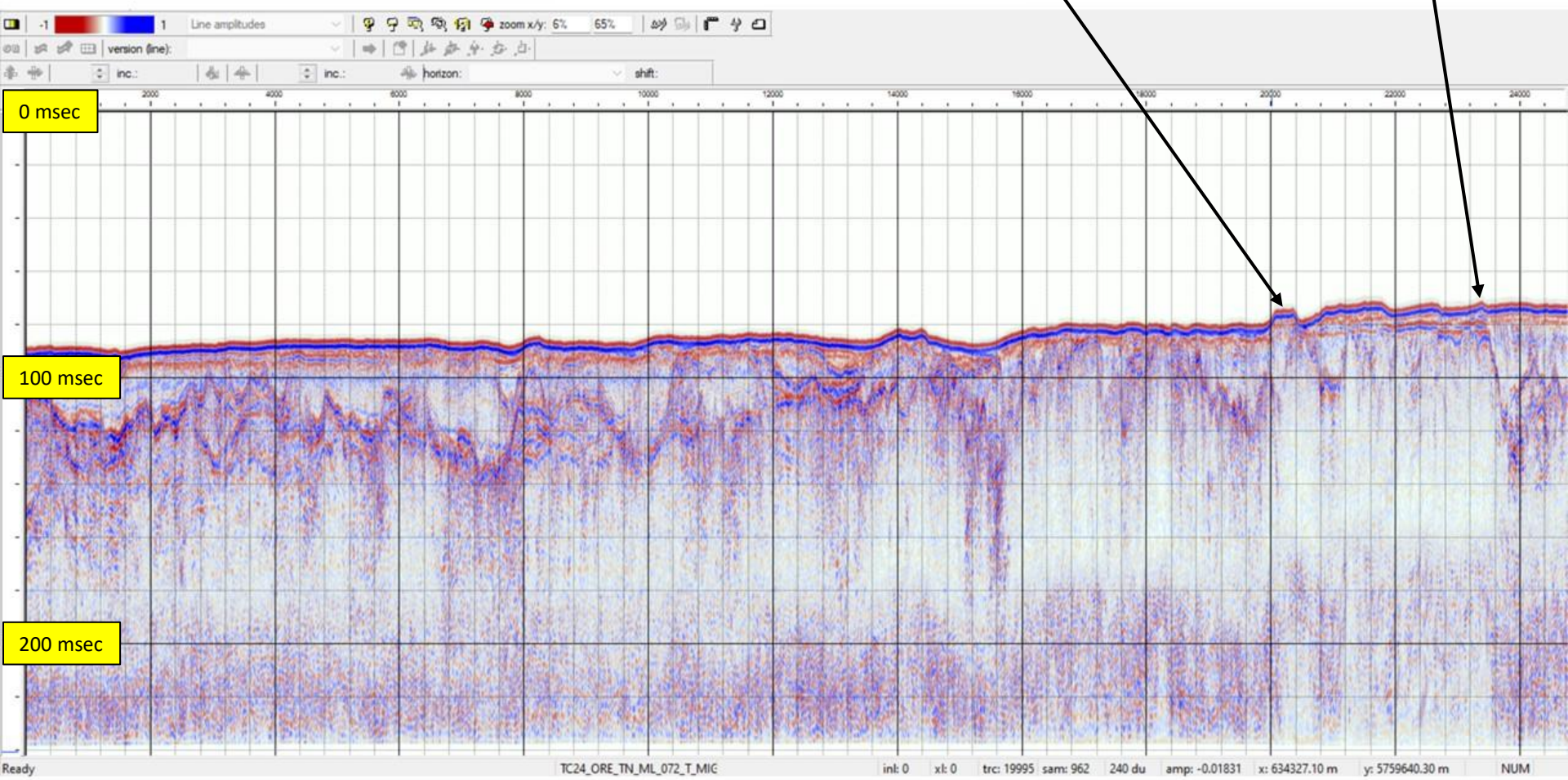
NW

SE

TC24_ORE_TN_ML_072

6

7



0 msec

100 msec

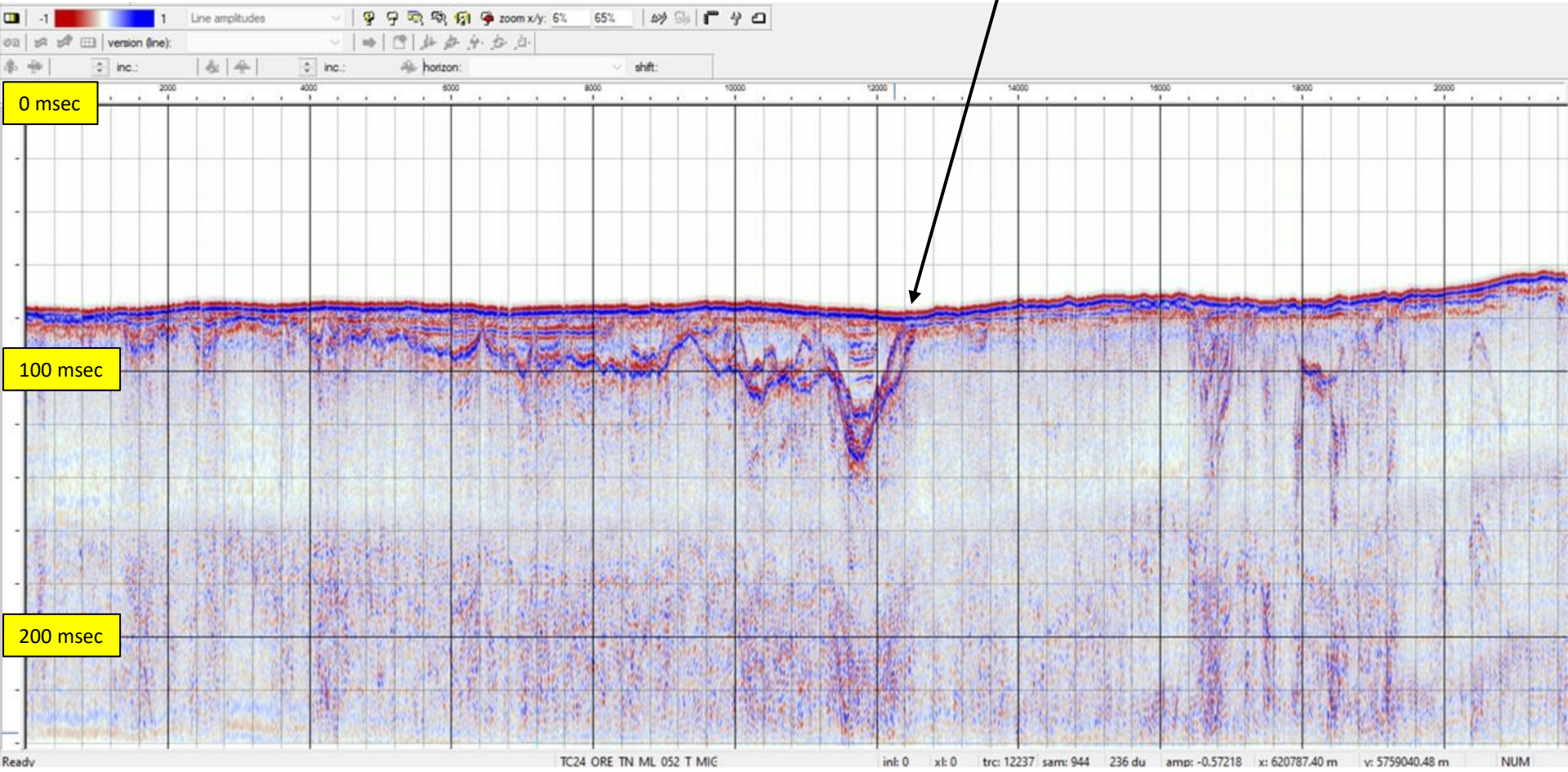
200 msec

SW

NE

TC24_ORE_TN_ML_052

8



SW

NE