

# UK Celtic Sea Floating Offshore Wind Round 5 - site characteristics

Peter Croker, The M Horizon (UK) Limited, February 2024

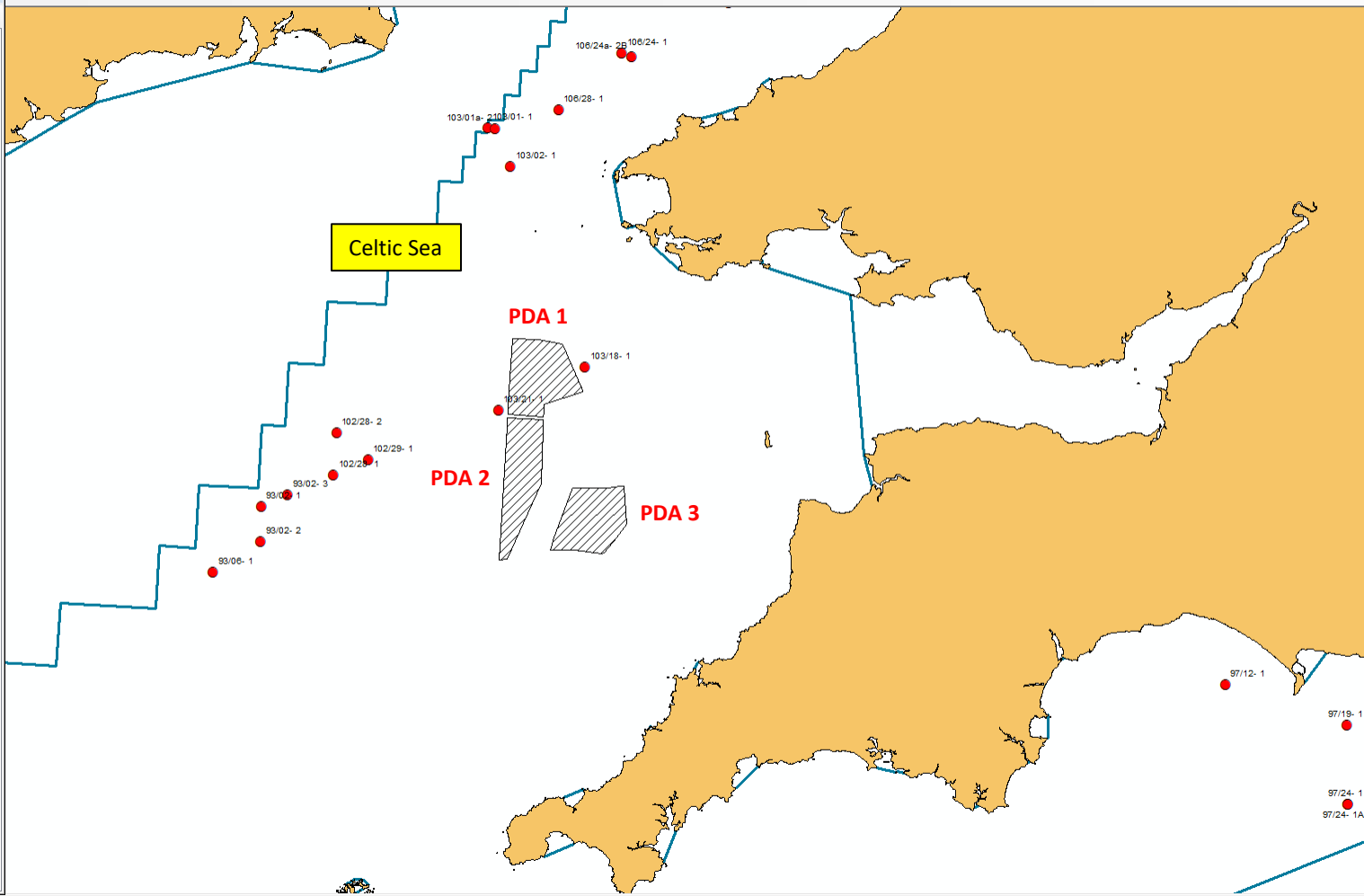
## References

The Crown Estate (2023) Information Memorandum, Celtic Sea Floating Offshore Wind Leasing Round 5, published December 2023.

SLB (2017) Seismic Processing, Imaging & Value-Added Products Report for Oil and Gas Authority UK. South-West Britain 2016 2D. Schlumberger Geosolutions contract number EE69, 31st March 2017.

Table Of Contents

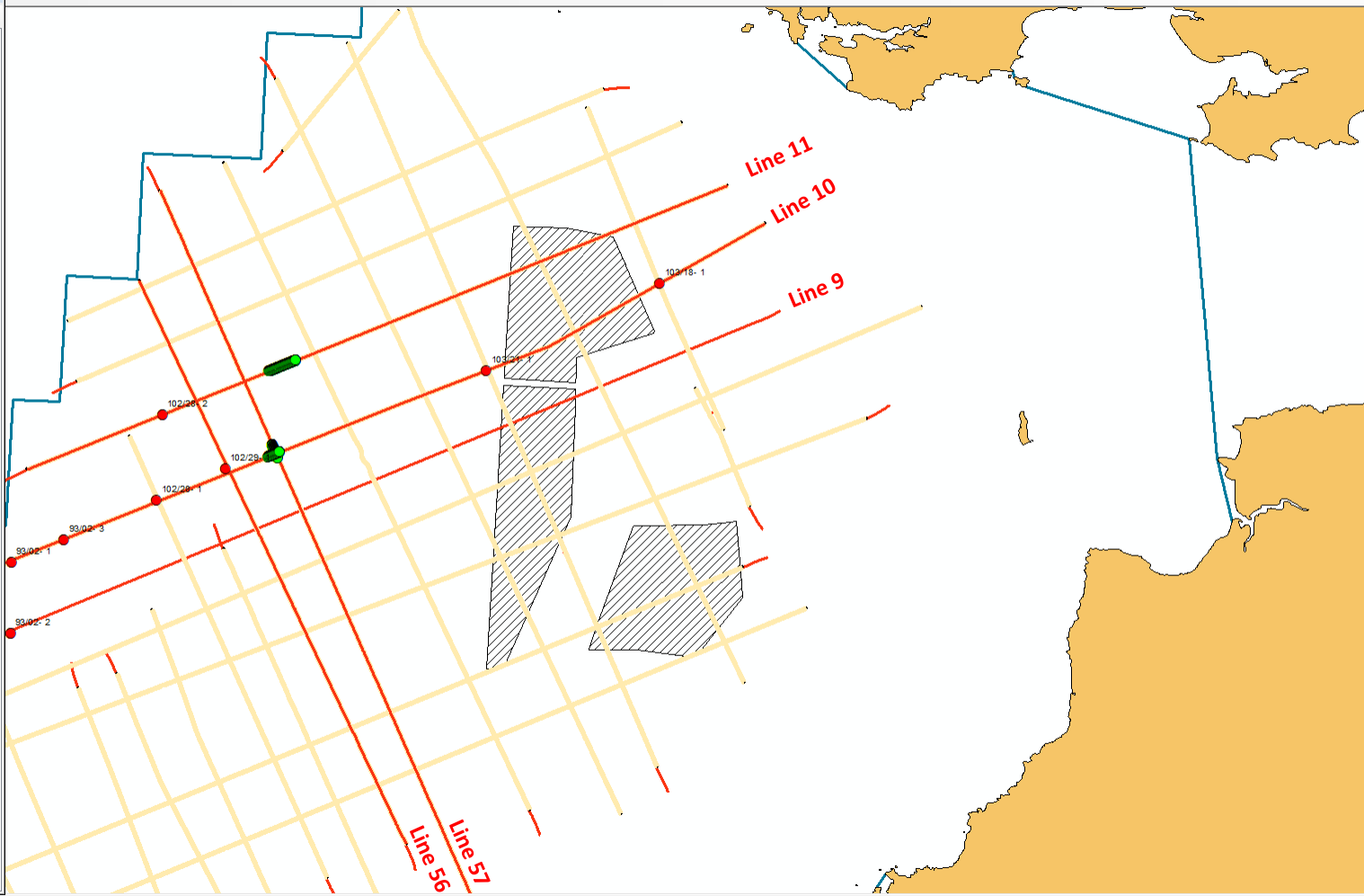
- Layers
- WG162D\_10\_Tr\_SP\_sel
- WG162D\_11\_Tr\_SP\_sel
- WG162D\_57\_Tr\_SP\_sel
- OGA\_Wells\_WGS84 Feb 2019
- WG162D\_selected\_lines
- WG162D\_line
- WG162D\_point
- OGA\_seismic\_2016\_lines\_WG162D0001
- NPA Layers
- SWOB Selected shallow geophysics anomalies
- OGA\_2D\_seismic\_2016\_lines
- UK\_Offshore\_Wind\_Leasing\_Round\_5\_-\_PDAs
- Coastline
- World\_EEZ
- World\_12NM
- GeoPartners\_NCS15
- UKCombinedRockMap\_WGS84
- AuditUKCombinedRock\_WGS84
- OSPAR threatened and/or declining habitats
- MCZ\_Natural\_England\_and\_JNCC
- UK\_SACs\_with\_Marine\_Components\_WGS84
- UK\_OffshoreMPAs\_WGS84
- SWOB\_shallow seismic location map.png
- UK\_FLOW\_Erebus\_site
- UK\_FLOW\_Valorous\_site\_boundary
- EMODnet\_2022\_E4.tif
- EMODnet\_2022\_E3.tif



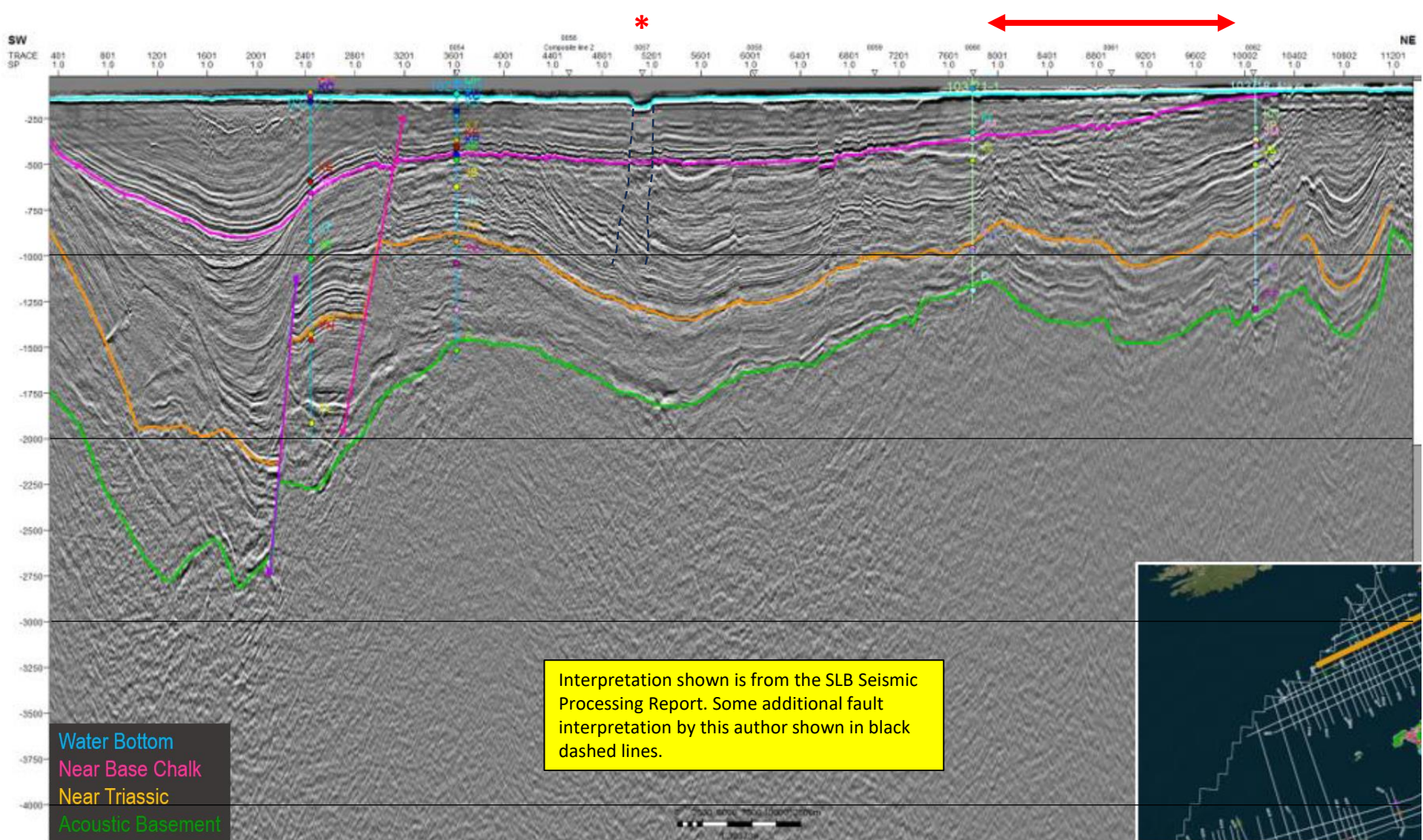
Location map showing Project Development Areas 1-3 and former well locations in the UK sector of the Celtic Sea.

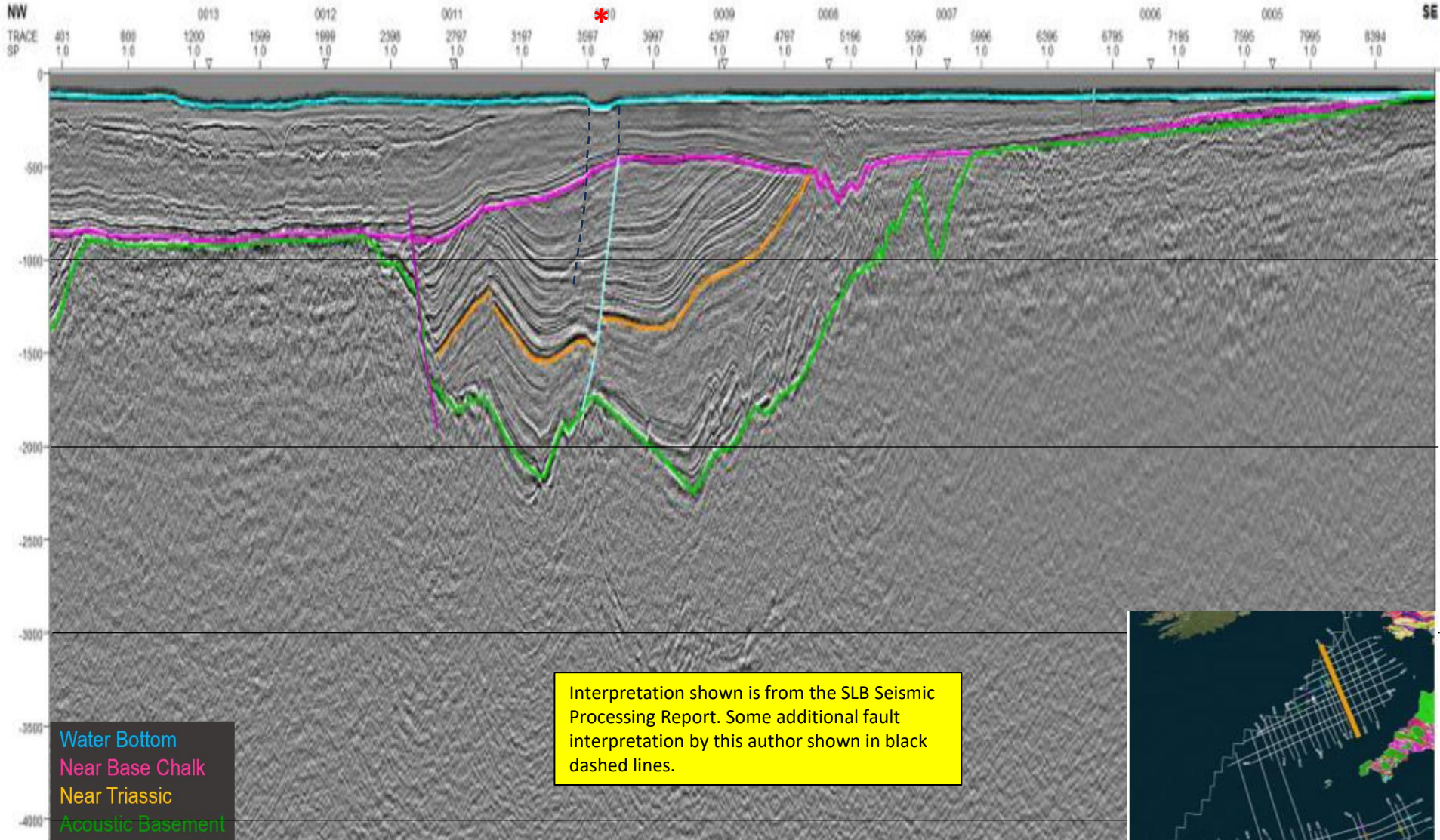
Table Of Contents

- Layers
  - WG162D\_10\_Tr\_SP\_sel
  - WG162D\_11\_Tr\_SP\_sel
  - WG162D\_57\_Tr\_SP\_sel
  - OGA\_Wells\_WGS84 Feb 2019
  - WG162D\_selected\_lines
  - WG162D\_line
  - WG162D\_point
  - OGA\_seismic\_2016\_lines\_WG162D0001
  - NPA Layers
  - SWOB Selected shallow geophysics anomalies
  - OGA\_2D\_seismic\_2016\_lines
  - UK\_Offshore\_Wind\_Leasing\_Round\_5\_-\_PDAs
  - Coastline
  - World\_EEZ
  - World\_12NM
  - GeoPartners\_NCS15
  - UKCombinedRockMap\_WGS84
  - AuditUKCombinedRock\_WGS84
  - OSPAR threatened and/or declining habitats
  - MCZ\_Natural\_England\_and\_JNCC
  - UK\_SACs\_with\_Marine\_Components\_WGS84
  - UK\_OffshoreMPAs\_WGS84
  - SWOB\_shallow seismic location map.png
  - UK\_FLOW\_Erebus\_site
  - UK\_FLOW\_Valorous\_site\_boundary
  - EMODnet\_2022\_E4.tif
  - EMODnet\_2022\_E3.tif

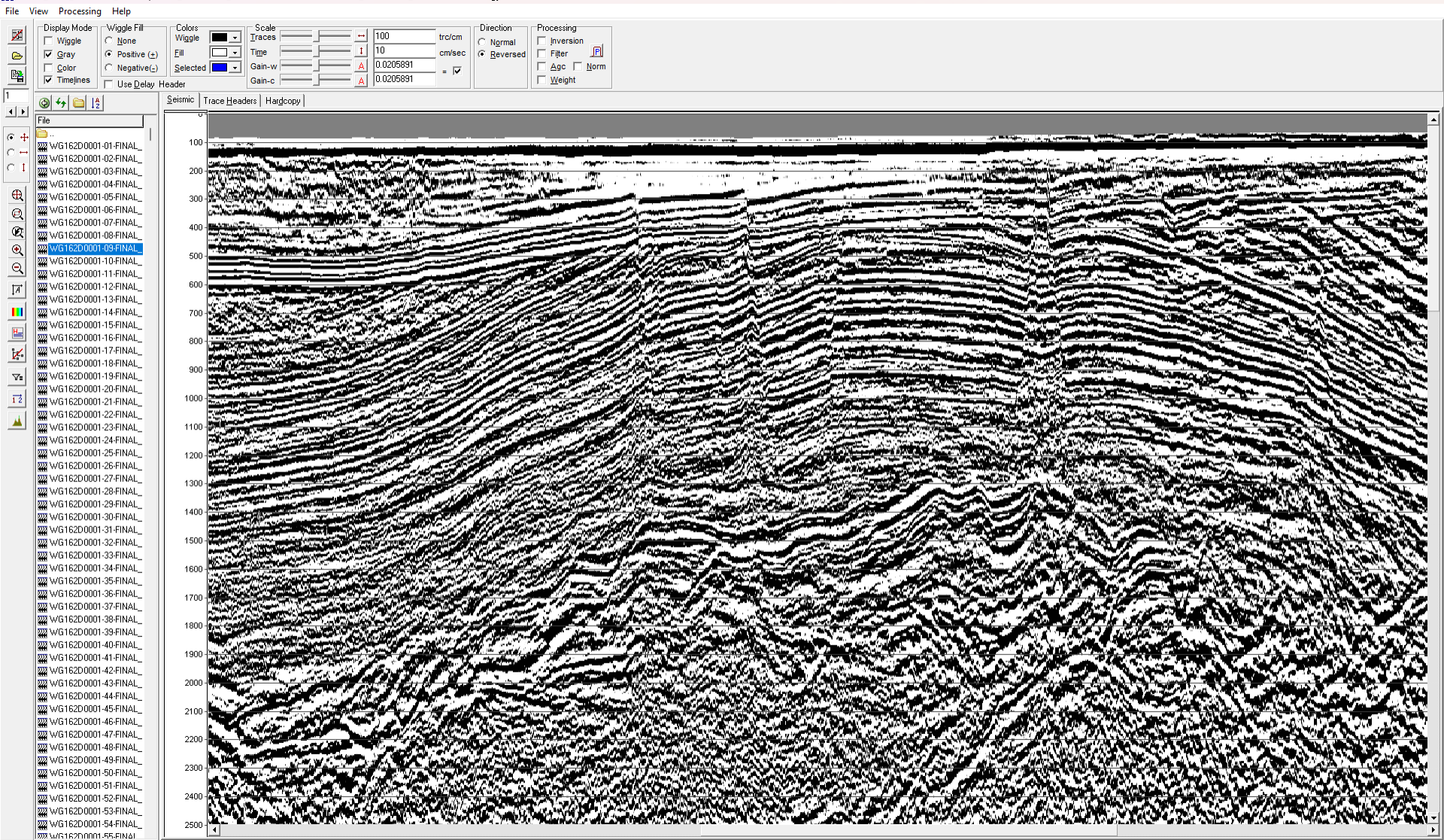


Location map showing PDAs 1-3 and OGA 2016 seismic survey. Green dots denote graben/channel feature.

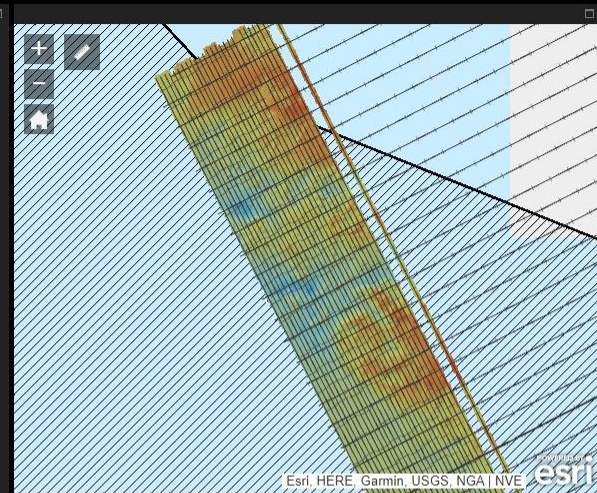
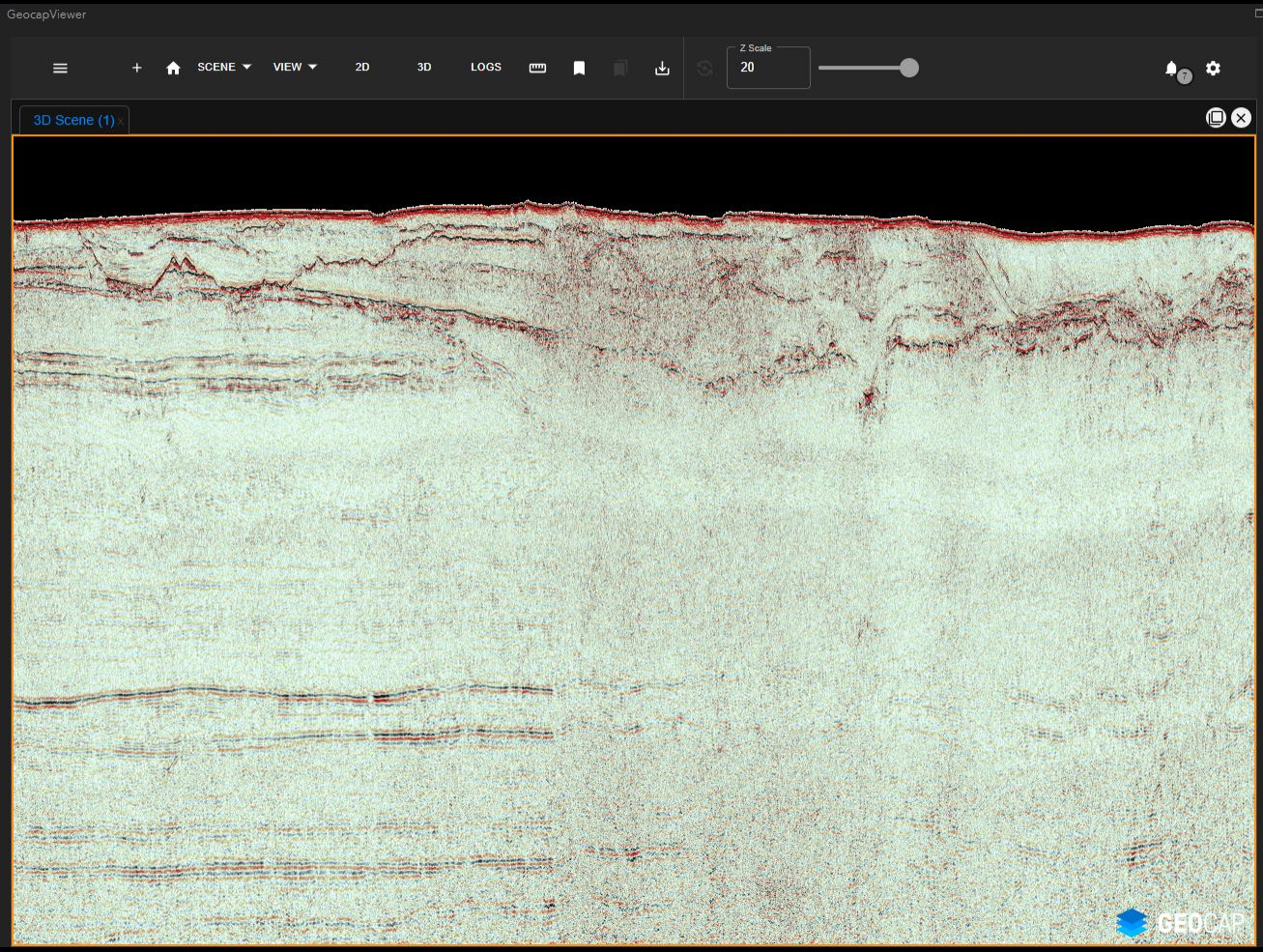




Seismic line 57. South is on RHS. Red asterisk marks graben/channel feature.



Part of seismic line 9. East is on RHS. Note apparent signal attenuation (white in this display) above clearly faulted anticline.

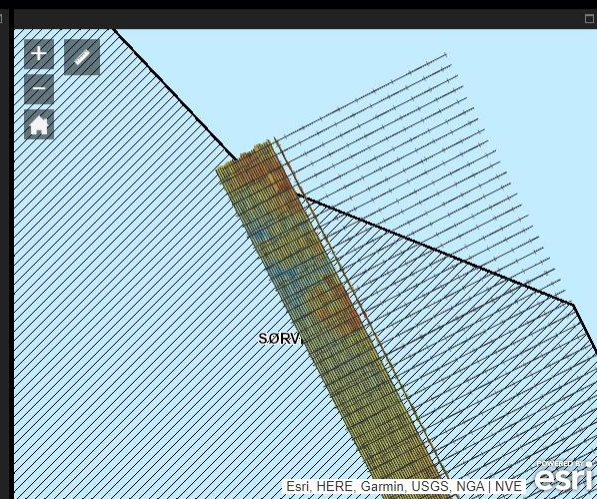
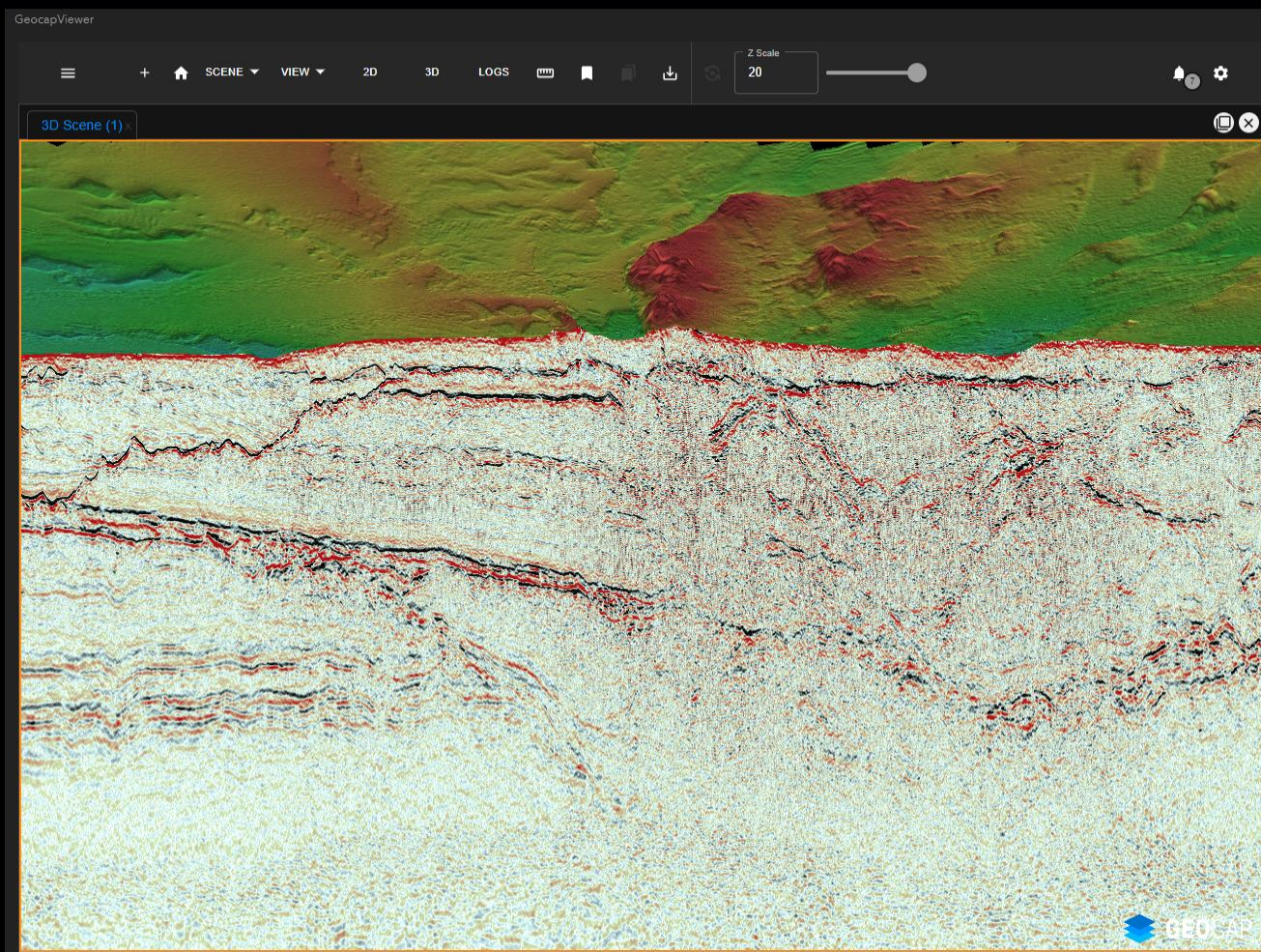


About Add Data

This application contains bathymetry and UHR seismic data with interpretation from the NPD22100 survey in the Southern North Sea II.

Read more about the data here:  
<https://www.sodir.no/en/whats-new/news/general-news/2023/first-offshore-wind-data-sets-available-in-diskos/>

2D Ultra-High-Resolution (UHR) multi-channel seismic acquired in 2022 from part of the Norwegian offshore wind round area - Sørilige Nordsjø II (Southern North Sea II). A reminder that hydrocarbon seepage from the seafloor can result in both positive and negative bathymetric features. Data courtesy of the Norwegian Offshore Directorate and GEOCAP.



About Add Data

This application contains bathymetry and UHR seismic data with interpretation from the NPD22100 survey in the Southern North Sea II.

Read more about the data here:  
<https://www.sodir.no/en/whats-new/news/general-news/2023/first-offshore-wind-data-sets-available-in-diskos/>

2D Ultra-High-Resolution (UHR) multi-channel seismic acquired in 2022 (zoom of previous line) displayed together with multibeam bathymetry data from part of the Norwegian offshore wind round area - Sørlike Nordsjø II (Southern North Sea II). Note that the bathymetry data is draped on the seismic data so in this view we are looking at the underside of the seafloor bathymetry surface. Data courtesy of the Norwegian Offshore Directorate and GEOCAP.