

Some observations on the proposed expansion of Marine Protected Areas (MPAs) in the western Irish Sea

Peter Croker, The M Horizon (UK) Limited, November 2023

References

Marine Protected Area Advisory Group (2023). Ecological sensitivity analysis of the western Irish Sea to inform future designation of Marine Protected Areas (MPAs). Report for the Department of Housing, Local Government and Heritage, Ireland (DHLGH).

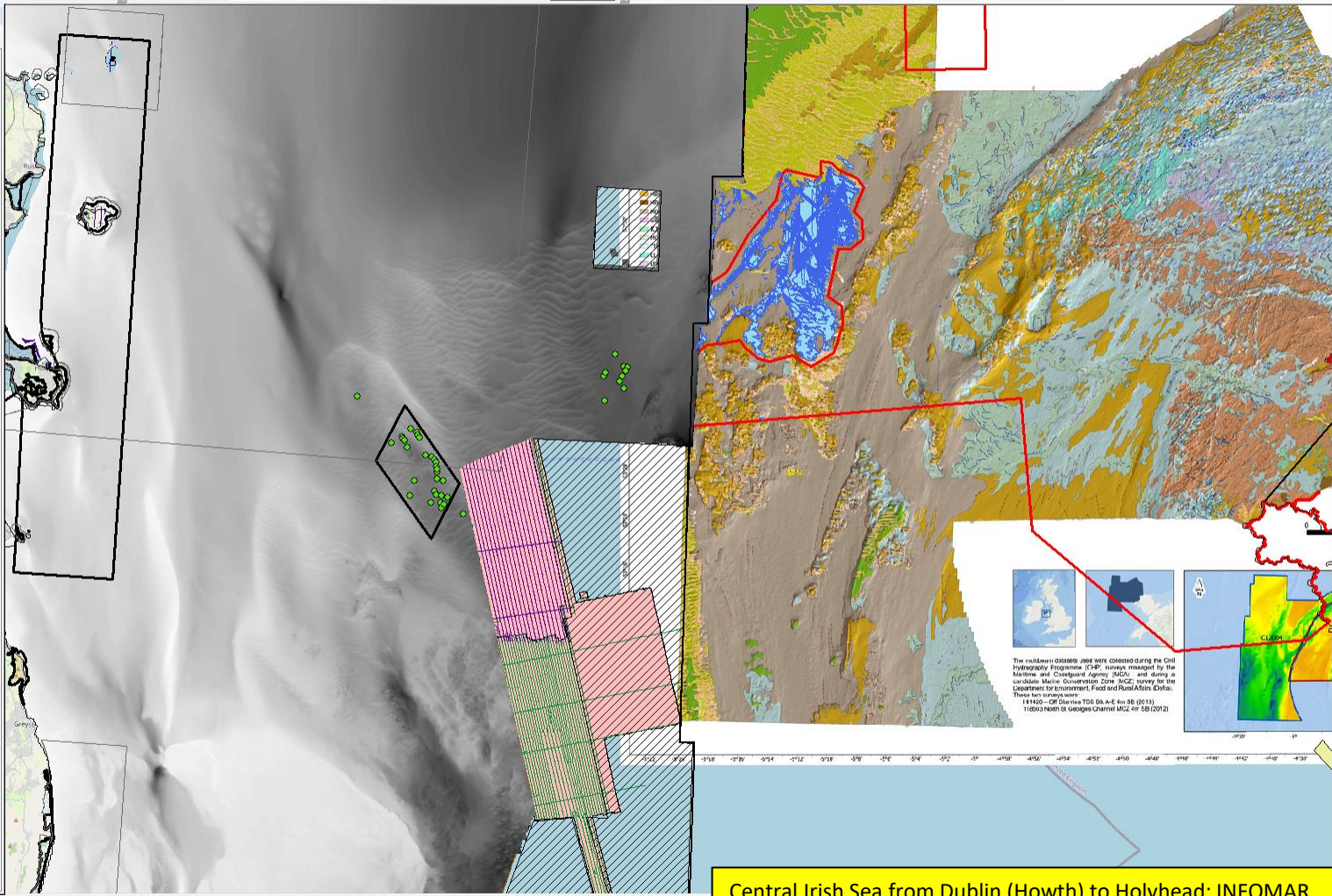
Marine Protected Area Advisory Group (2020). Expanding Ireland's Marine Protected Area Network. Report for the Department of Housing, Local Government and Heritage, Ireland (DHLGH).

Table Of Contents

Layers

- NPWS_MDAC_mounds
- World_EEZ
- World_12NM
- Coastline
- C20180405_SubmarineStructures_v3_2_polygons
- SPA_ITM_2023_07_Marine
- SPA_ITM_2023_05
- SAC_ITM_2023_07
- SAC_ITM_2022_11
- SAC_ITM_2019_12
- SAC_Offshore_WGS84_2015_11
- INFOMAR_Irish_Sea_2023_survey_plan_outline_A
- INFOMAR_Irish_Sea_2023_survey_plan_outline_B
- INFOMAR_Bathy_10m_Inshore_WGS84_LAT_TIFF_June 2023.tif
- Seabed_Survey_Tracklines_IE_Waters_WGS84_LAT_Jan_2023
- Non_INFOMAR_Tracklines_Coverage
- Seabed_Survey_Coverage_IE_Waters_WGS84_Jan_2023
- JNCC_CCSSAC_HiConfidence_Potential_MDAC.png
- MCZs_Natural_England_and_JNCC
- c20200527_UK_SACs_with_Marine_Components_WGS84
- c20180927_OffshoreMPAs_WGS84
- BGS_Seabed_geology_10K_Anglesey.jpg
- EMODnet_2020_D4_rgb.tif
- UKHO geotiffs
- UKHO csvs
- Basemap

 Current gaps in INFOMAR survey



The multibeam CHIRPES 3000 were collected during the Civil Hydrography Programme (CHP) surveys managed by the Maritime and Coastguard Agency (MCA), and during a Carabide Marine Conservation Zone (MCZ) survey for the Department for Environment, Food and Rural Affairs (Defra).
These two surveys were:
114150 - CHIRPES TDS DA A-E 4m SB (2013)
116003 north St Georges Channel MCZ 4m SB (2012)

Central Irish Sea from Dublin (Howth) to Holyhead: INFOMAR grey-scale bathymetry (LHS) and BGS 1:10K seabed geology map (RHS), together with existing MPAs and MDAC mounds.

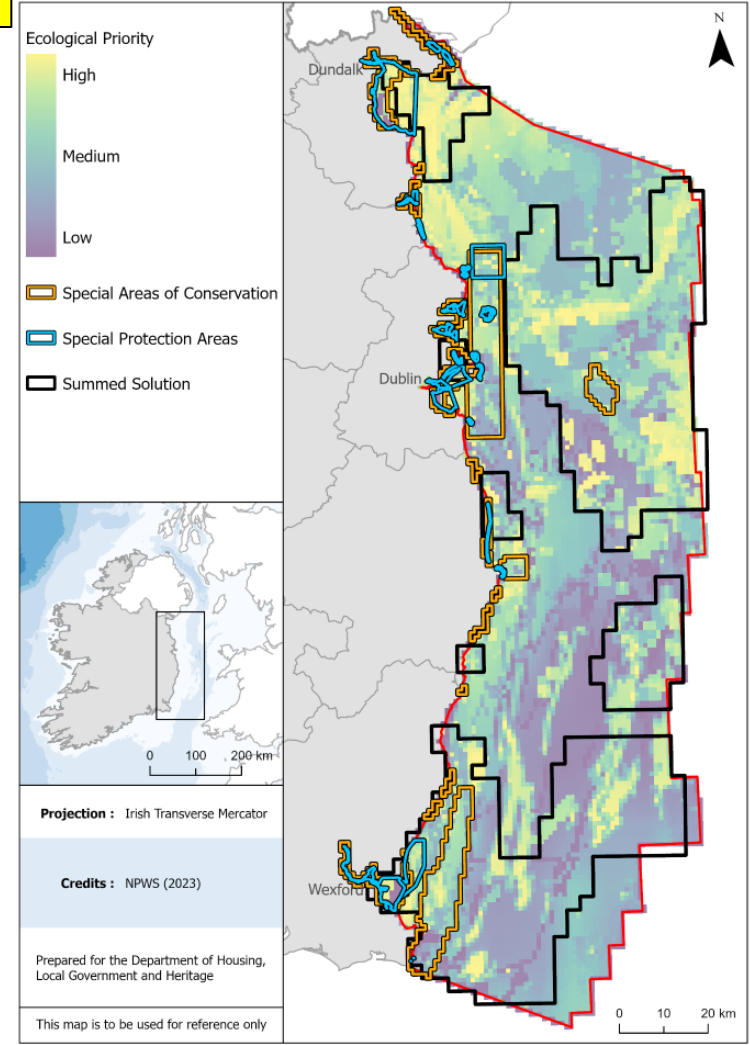
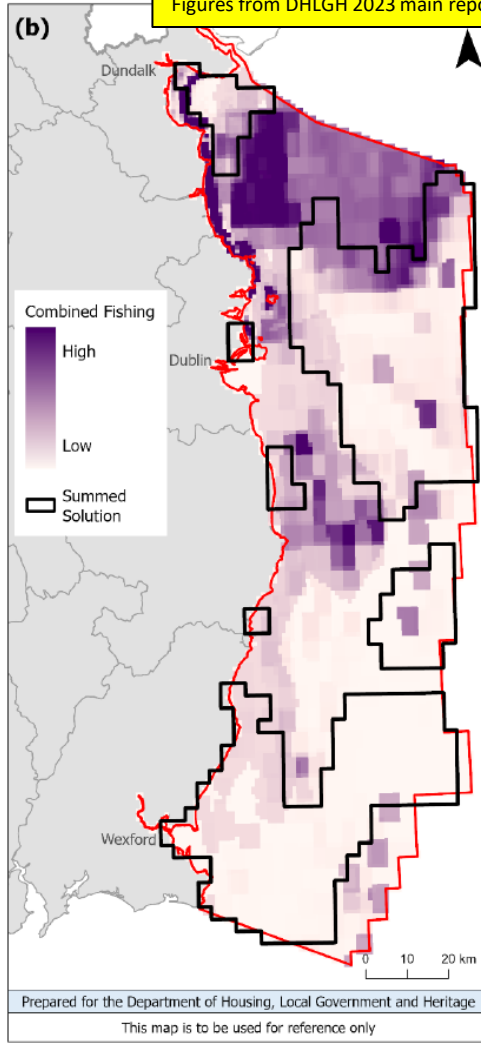
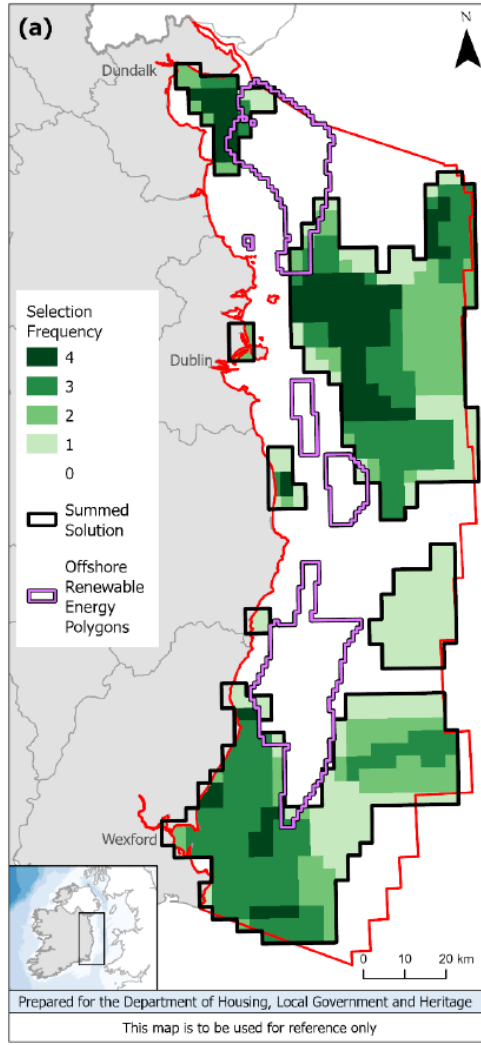


Figure 1. Two-panel presentation of key outcomes from conservation prioritization analyses of the western Irish Sea, completed by the MPA Advisory Group in April 2023.

Figure 4.6.1. Current Natura 2000 designated sites (SACs and SPAs) combined with outputs of the current *prioritiz* and Zonation analyses (as shown in Figure 4.2.1).

Figures from DHLGH 2023 main report

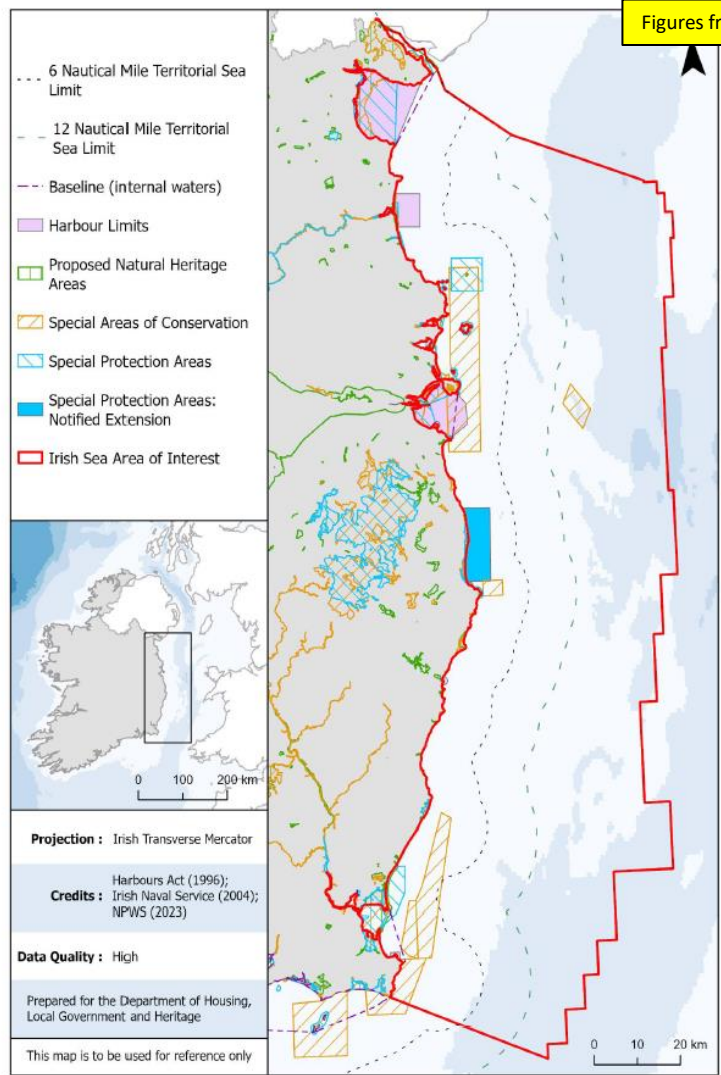


Figure 2.1.2. Existing spatial protection (SACs, SPAs and NHAs), Territorial Sea limits, and harbour limits in the western Irish Sea. The 6nm and 12nm limits are buffered from the coastline and the closing baselines of Dundalk Bay, Dublin Bay and Wexford Bay. Data quality: high.

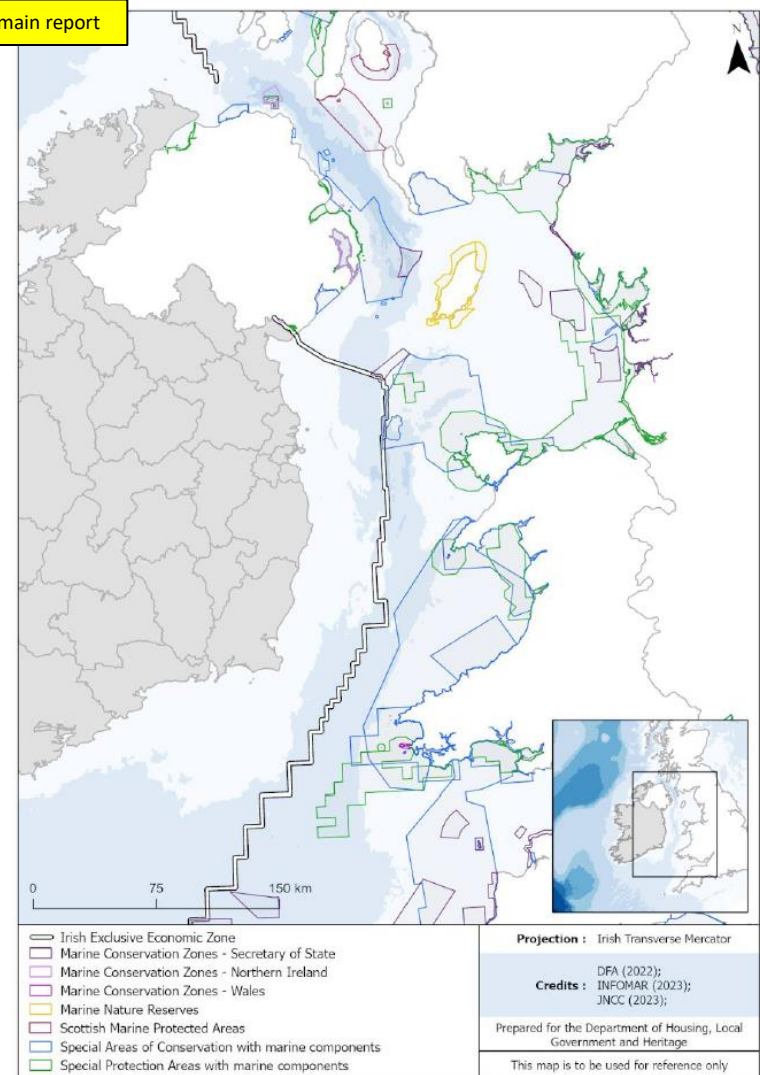
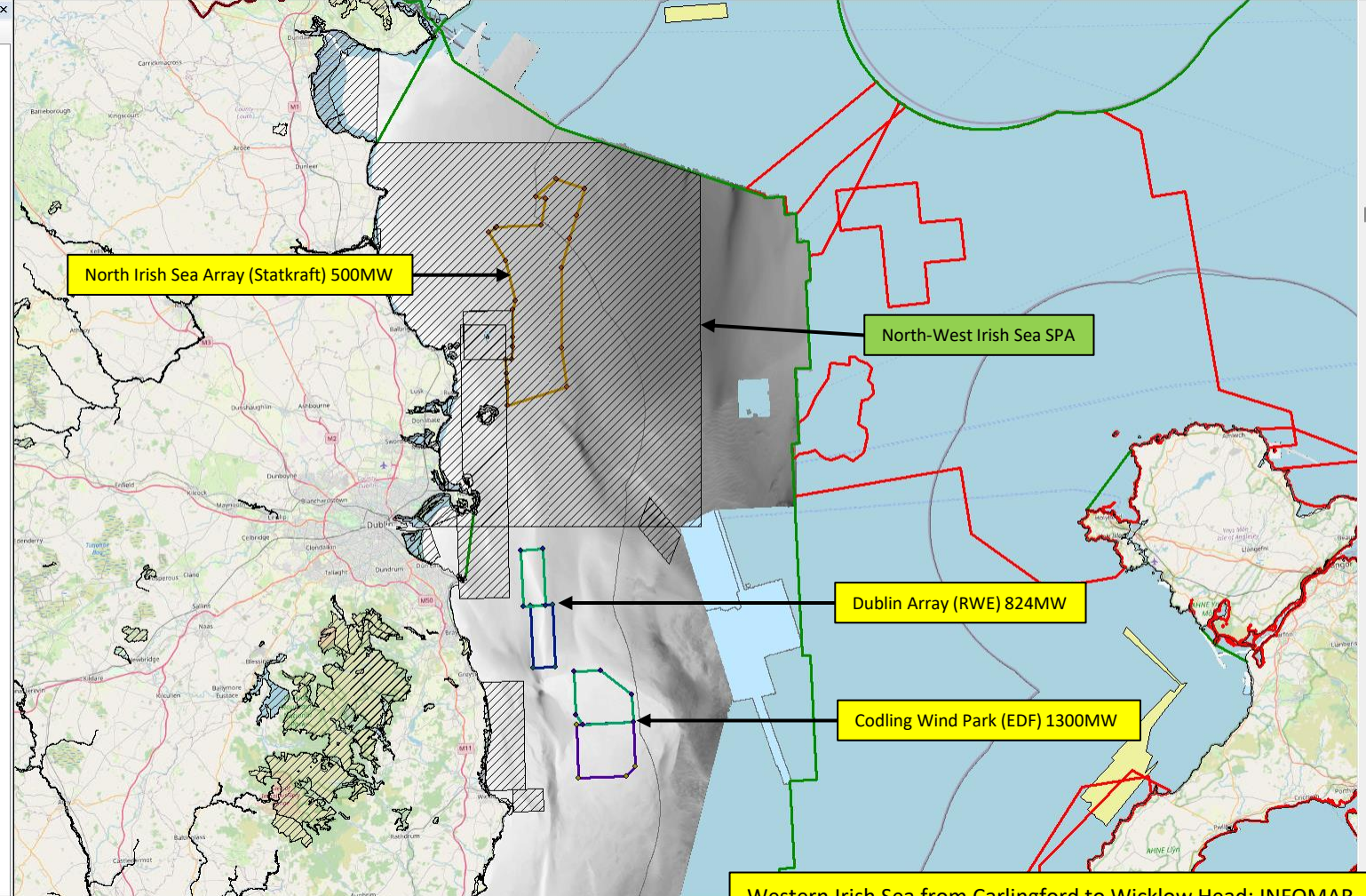


Figure 4.8.1. Marine protected areas in the northern and eastern Irish Sea and adjacent areas outside of the Irish EEZ; based on data hosted by the UK's Joint Nature Conservation Committee.

Layers

- Land borders
- Coastline
- SPA_ITM_2023_07_Marine
- SPA_ITM_2023_05
- SAC_ITM_2023_07
- SAC_Offshore_WGS84_2022_11
- MAC_003_pts
- MAC_003_line
- MAC_004_pts
- MAC_004_line
- MAC_005_pts
- MAC_005_line
- MAC_006N_pts
- MAC_006N_line
- MAC_006S_pts
- MAC_006S_line
- North_Irish_Sea_Array_Foreshore_Licence_pts
- NISA Foreshore Licence.png
- World_EEZ_boundaries
- World_12NM
- c20200527_UK_SACs_with_Marine_Components_WGS84
- c20180927_OffshoreMPAs_WGS84
- Ireland_OREDP_MRIA_04_Jan_2021
- MCZs_Natural_England_and_JNCC
- INFOMAR_Bathymetry_10m_Inshore_TIFF_June_2023.tif
- INFOMAR_Tracklines_January_2023
- Non_INFOMAR_Survey_Coverage
- INFOMAR_Seabed_Survey_Coverage_January_2023
- EMODnet_2020_D4_rgb.tif
- Pipelines_eab
- Basemap



Western Irish Sea from Carlingford to Wicklow Head: INFOMAR grey-scale bathymetry, MPAs, SPAs and ORESS 1 Final Auction Results with Operator and Offer Quantity (MW).