

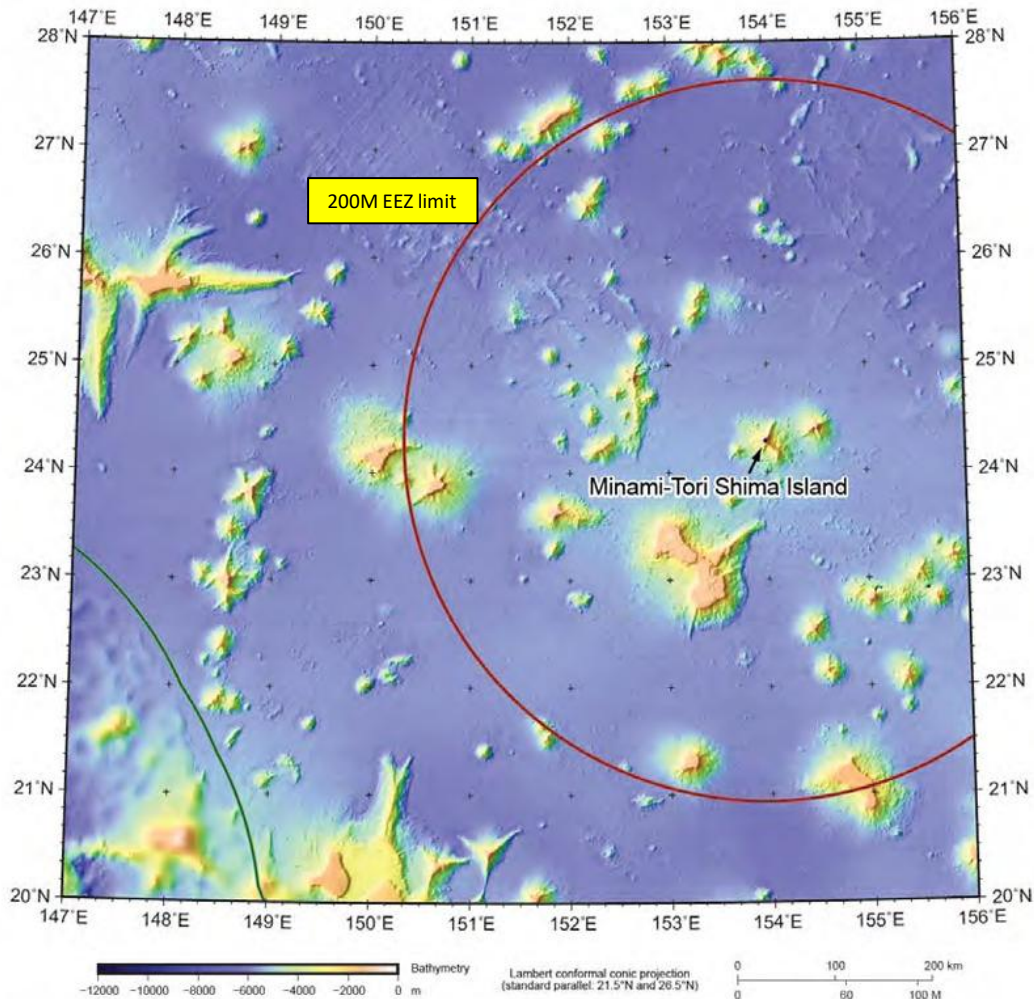
Japan progresses deep-sea mining trials

Peter Croker, The M Horizon (UK) Limited, February 2026

Sources and references

Anon. (2020) Japan pioneers extracting rare-earth elements from the deep sea. Nature portfolio (Advertisement Feature)

CLCS (2012) Summary of Recommendations of the Commission on the Limits of the Continental Shelf in regard to the Submission made by Japan on 12 November 2008 (DOALOS website)



The Minami-Tori Shima Island region (MTS)

Note: the Commission recommended that there is no continental shelf beyond 200 M in the Minami-Tori Shima Island region.

(CLCS Recommendations to Japan, 19 April 2012)

Figure 8. Overview bathymetric map of the Minami-Tori Shima Island Region. (Fig. 2.1. of MTS-MB-DOC-01).



Minami-Tori Shima Island (Google Maps)

**CHIKYU**
Drilling Ship

Details



Track



Add photo



Add to fleet

Destination

OFF MINAMITORISHIMA

ETA: Jan 17, 02:00

Speed:

8.9 kn

Course:

196.1°

Draught:

9 m (max 9.2)

Status:

Last report:

Jan 12, 2026 04:23 UTC

Last Port

Shimizu, Japan

ATD: Jan 12, 00:15 UTC (22 days ago)

Track for \$25 / month

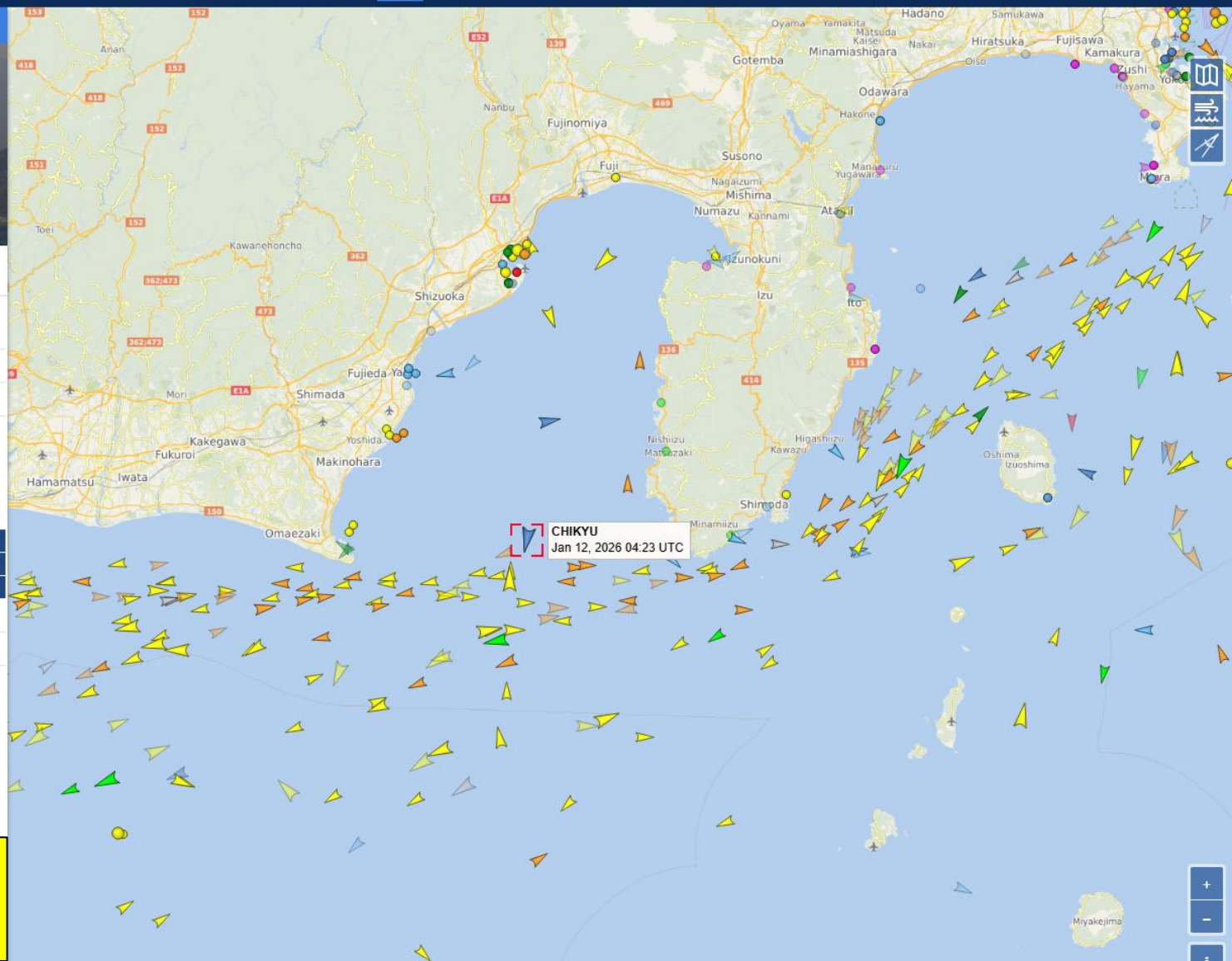
Satellite position: 45 min ago

PORT CALLS

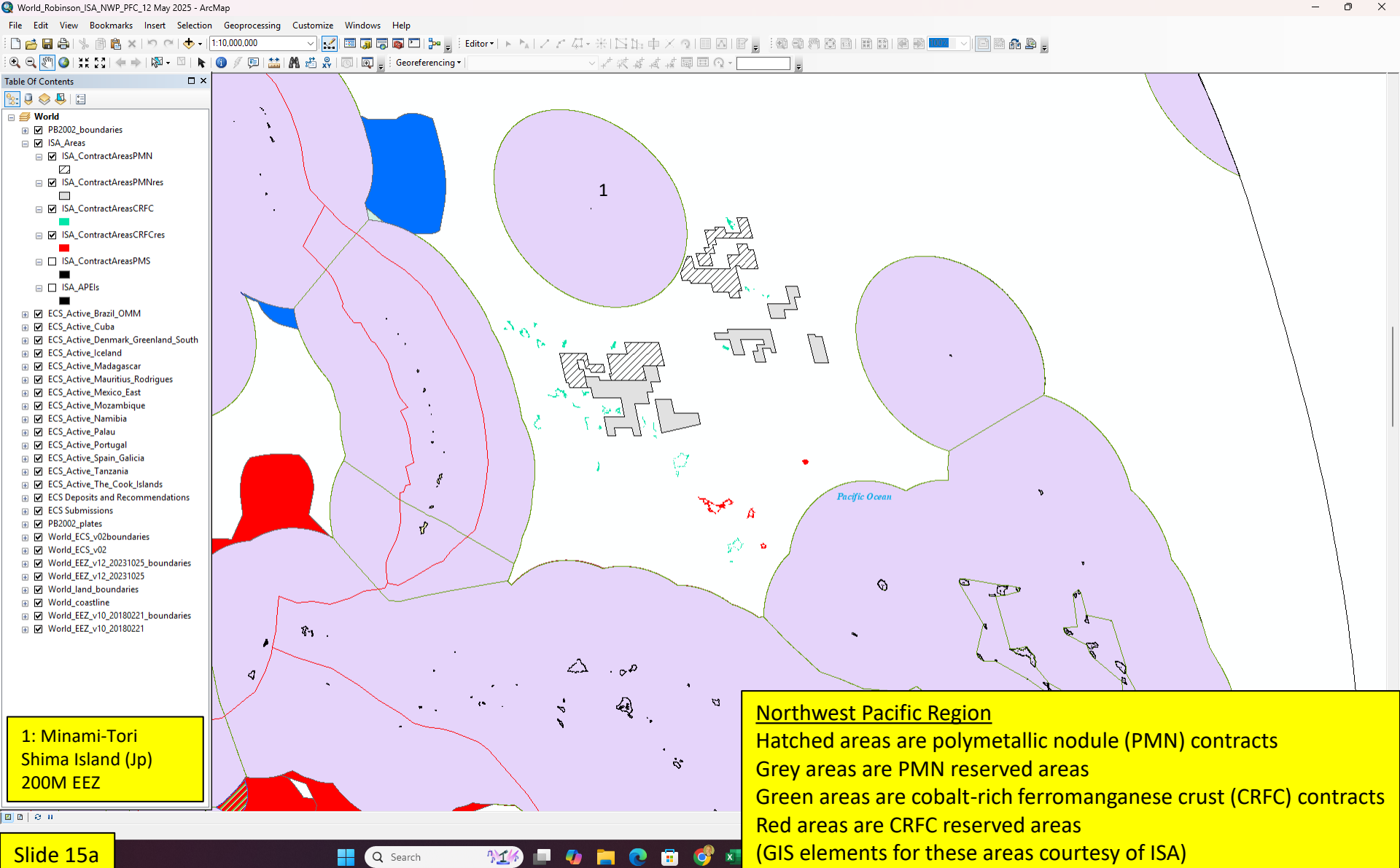
WEATHER

VESSEL PARTICULARS

Gross Tonnage:	Built:	IMO:
56752	2005	9234044
Deadweight:	Size:	MMSI:
27161	210 / 38m	432522000



Drillship Chikyu exiting Suruga Bay 12 January 2026, en route to Minami-Tori Shima Island (courtesy of VesselFinder)



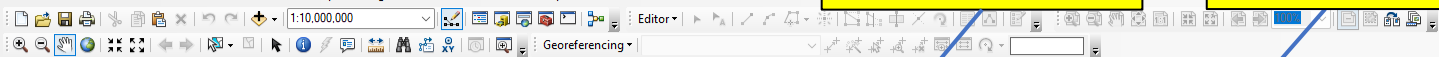


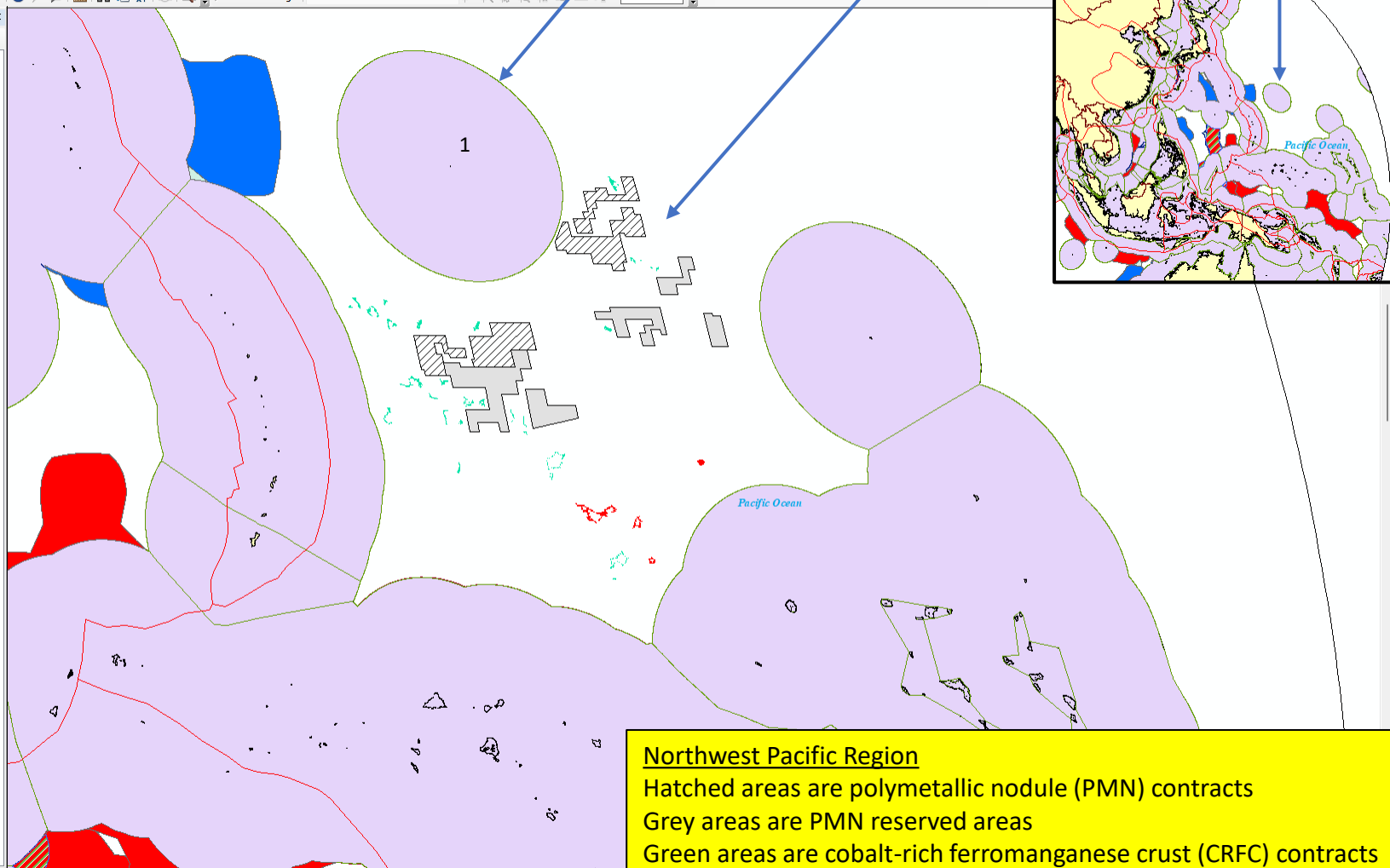
Table Of Contents

- World
 - ☒ PB2002_boundaries
 - ☒ ISA_Areas
 - ☒ ISA_ContractAreasPMN
 - ☒ ISA_ContractAreasPMNres
 - ☐ ISA_ContractAreasCRFC
 - ☒ ISA_ContractAreasCRFCres
 - ☐ ISA_ContractAreasPMS
 - ☐ ISA_APEIs
 - ☒ ECS_Active_Brazil_OMM
 - ☒ ECS_Active_Cuba
 - ☒ ECS_Active_Denmark_Greenland_South
 - ☒ ECS_Active_Iceland
 - ☒ ECS_Active_Madagascar
 - ☒ ECS_Active_Mauritius_Rodrigues
 - ☒ ECS_Active_Mexico_East
 - ☒ ECS_Active_Mozambique
 - ☒ ECS_Active_Namibia
 - ☒ ECS_Active_Palau
 - ☒ ECS_Active_Portugal
 - ☒ ECS_Active_Spain_Galicia
 - ☒ ECS_Active_Tanzania
 - ☒ ECS_Active_The_Cook_Islands
 - ☒ ECS_Deposits and Recommendations
 - ☒ ECS_Submissions
 - ☒ PB2002_plates
 - ☒ World_ECS_v02boundaries
 - ☒ World_ECS_v02
 - ☒ World_EEZ_v12_20231025_boundaries
 - ☒ World_EEZ_v12_20231025
 - ☒ World_land_boundaries
 - ☒ World_coastline
 - ☒ World_EEZ_v10_20180221_boundaries
 - ☒ World_EEZ_v10_20180221

Area of Chikyu operations

ISA licensed areas

Area of Chikyu operations



1: Minami-Tori
Shima Island (Jp)
200M EEZ

Northwest Pacific Region

Hatched areas are polymetallic nodule (PMN) contracts

Grey areas are PMN reserved areas

Green areas are cobalt-rich ferromanganese crust (CRFC) contracts

Red areas are CRFC reserved areas

(GIS elements for these areas courtesy of ISA)