

Rockall Bank and Porcupine Bank MPAs and VMEs

Peter Croker, The M Horizon (UK) Limited, February 2025

References

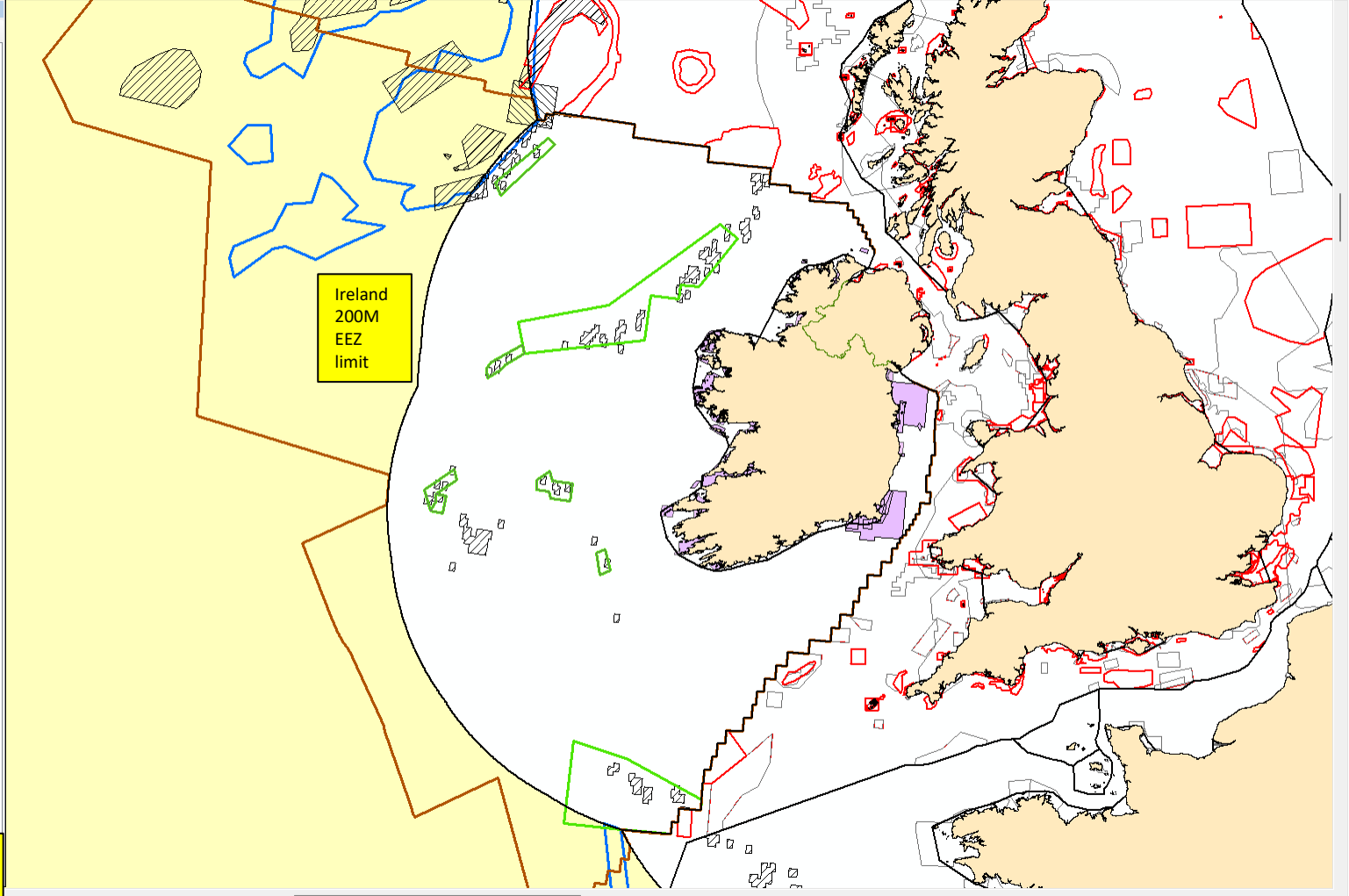
ICES (2024) Advice on areas where Vulnerable Marine Ecosystems (VMEs) are known to occur or are likely to occur in EU waters. Published 17 September 2024.

ICES (2023) Advice on fishing opportunities, catch, and effort: Ecoregions in the Northeast Atlantic and adjacent seas. Published 02 October 2023.

ICES (2023) Advice on areas where Vulnerable Marine Ecosystems (VMEs) are known to occur or are likely to occur in EU waters. Published 18 April 2023.

Table Of Contents

- Layers
- World_EEZ
- IRL_CS_Designated Area
- Land borders
- Coastline
- OSPAR_MPAs_WGS84
- OSPAR_MPAs_ABNJ_simplified
- OSPAR_all_polygons
- NPWS_SAC_Offshore_WGS84_2022_11
- MCZ_Natural_England_and_INCC
- UK_SACs_with_Marine_Components_WGS84
- UK_OffshoreMPAs_WGS84
- EU_Closures_as_of_September_2022
- ICES_2024_VME_Shapefile_scC
- ICES_2023_VME_Weighting_Algorithm_VME_Habitat
- ICES_2023_VME_Weighting_Algorithm_High
- ICES_2023_VME_Weighting_Algorithm_Medium
- ICES_2023_VME_Weighting_Algorithm_Low
- C-sqs_overlapping_400-800m_depth
- Rockall_Bank_Haddock_Box
- NEAFC VME Closures
- NEAFC VME Bottom fishing areas
- NPWS_SAC_ITM_2024_05
- NPWS_SPA_ITM_2024_01_Marine
- NPWS_SPA_2023_05
- World_High_Seas
- EMODnet_2022_bathymetry
- Source data
- Basemap



Green boxes are SACs (Ireland).
Hatched areas are EU closures, NEAFC VME closures (beyond 200M) and other specific fisheries closures (e.g. Haddock Box).

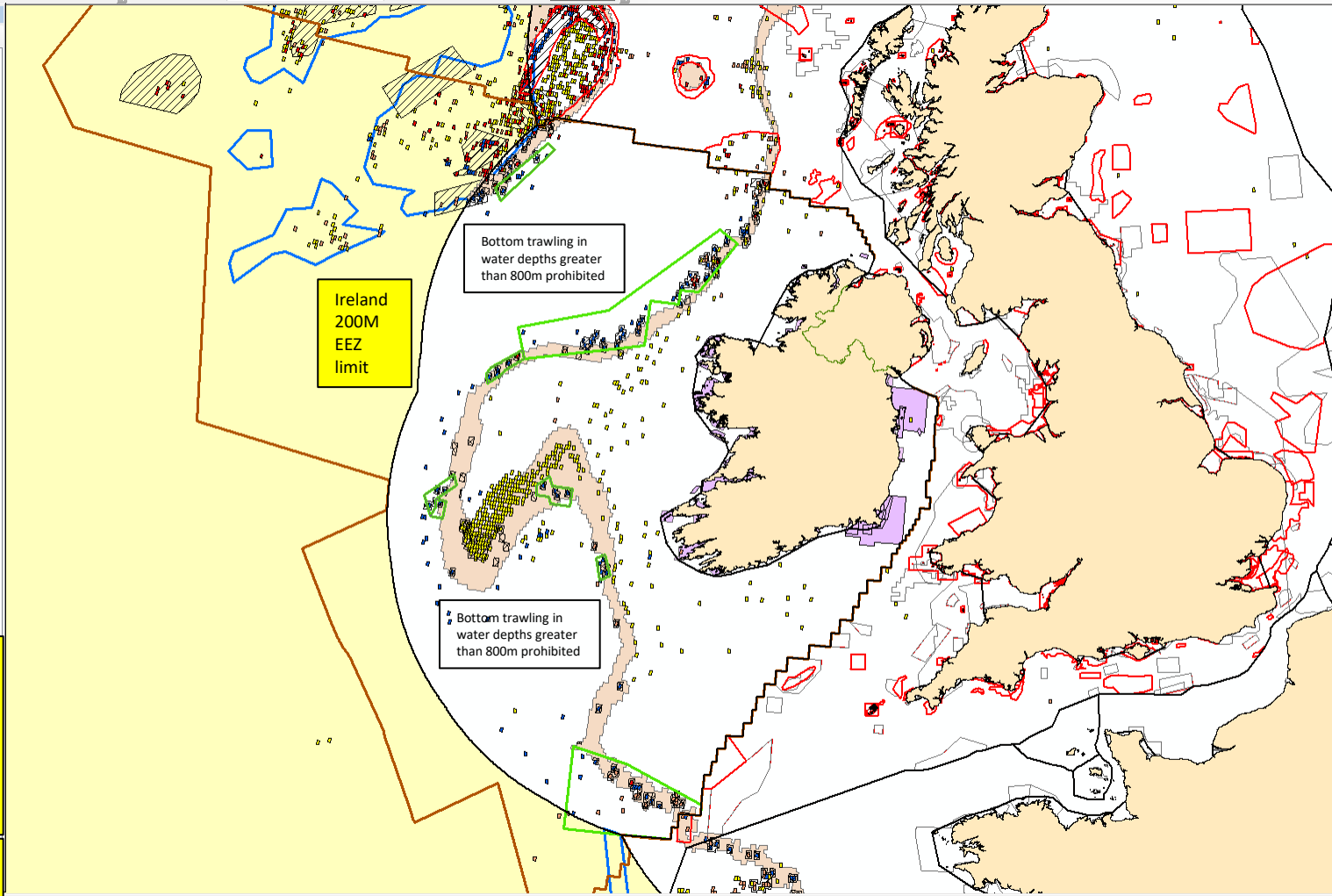
Overview map West of Ireland

Table Of Contents

- Layers
- World_EEZ
- IRL_CS_Designated Area
- Land borders
- Coastline
- OSPAR_MPAs_WGS84
- OSPAR_MPAs_ABNJ_simplified
- OSPAR_all_polygons
- NPWS_SAC_Offshore_WGS84_2022_11
- MCZ_Natural_England_and_JNCC
- UK_SACs_with_Marine_Components_WGS84
- UK_OffshoreMPAs_WGS84
- EU_Closures_as_of_September_2022
- ICES_2024_VME_Shapefile_scC
- ICES_2023_VME_Weighting_Algorithm_VME_Habitat
- ICES_2023_VME_Weighting_Algorithm_High
- ICES_2023_VME_Weighting_Algorithm_Medium
- ICES_2023_VME_Weighting_Algorithm_Low
- C-sqs_overlapping_400-800m_depth
- Rockall_Bank_Haddock_Box
- NEAFC VME Closures
- NEAFC VME Bottom fishing areas
- NPWS_SAC_ITM_2024_05
- NPWS_SPA_ITM_2024_01_Marine
- NPWS_SPA_2023_05
- World_High_Seas
- EMODnet_2022_bathymetry
- Source data
- Basemap

Light brown shading shows C-squares overlapping 400-800m water depth. Yellow boxes indicate low probability VME occurrence. Orange boxes show medium probability VME occurrence. Red boxes show high probability. Blue boxes indicate presence of VME Habitat.

Green boxes are SACs (Ireland). Hatched areas are EU closures, NEAFC VME closures (beyond 200M) and other specific fisheries closures (e.g. Haddock Box).



Overview map West of Ireland

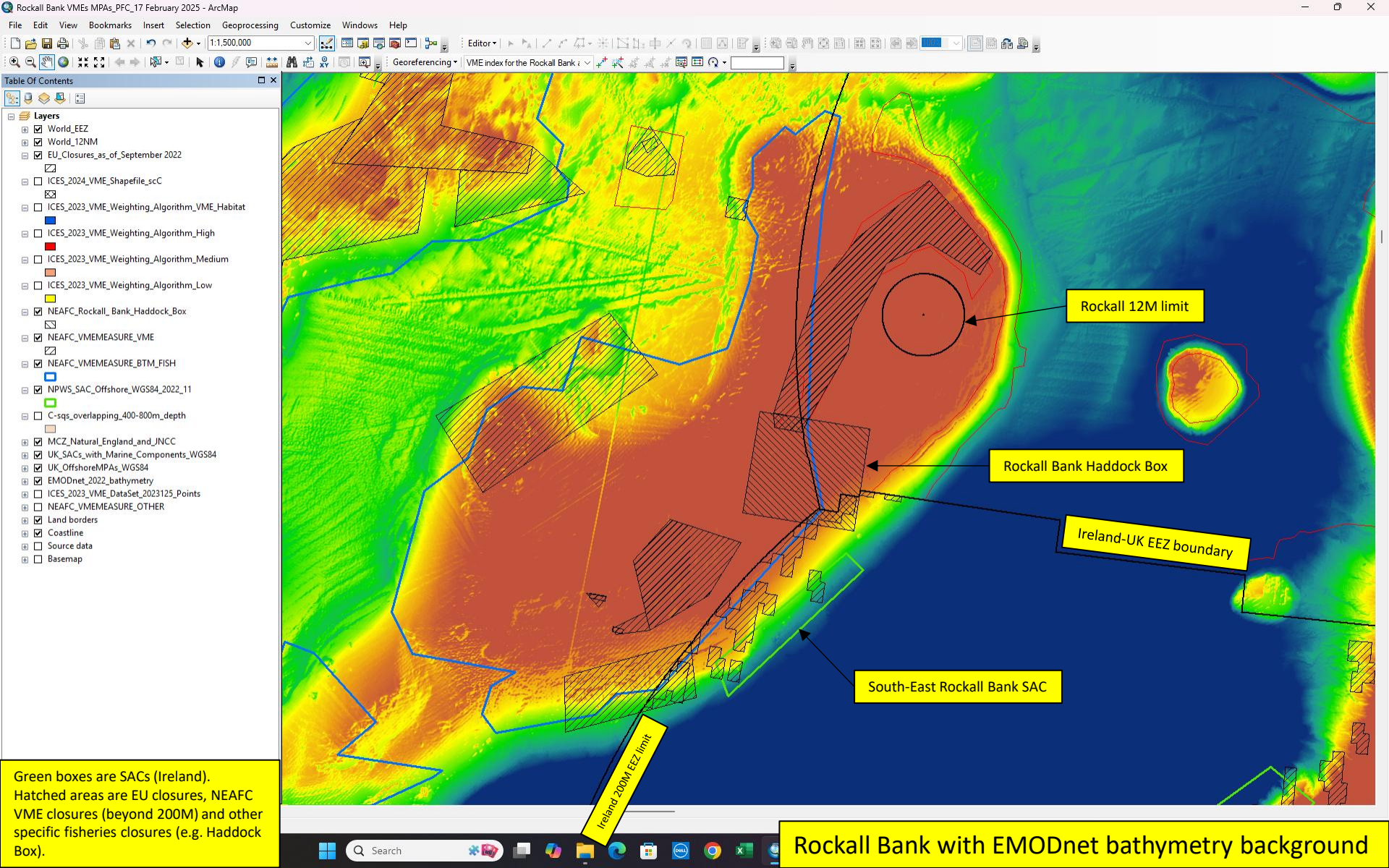


Table Of Contents

- Layers**
- World_EEZ
 - World_12NM
 - EU_Closures_as_of_September_2022
 - ICES_2024_VME_Shapefile_scC
 - ICES_2023_VME_Weighting_Algorithm_VME_Habitat
 - ICES_2023_VME_Weighting_Algorithm_High
 - ICES_2023_VME_Weighting_Algorithm_Medium
 - ICES_2023_VME_Weighting_Algorithm_Low
 - NEAFC_Rockall_Bank_Haddock_Box
 - NEAFC_VMEMEASURE_VME
 - NEAFC_VMEMEASURE_BTM_FISH
 - NPWS_SAC_Offshore_WGS84_2022_11
 - C-sqs_overlapping_400-800m_depth
 - MCZ_Natural_England_and_JNCC
 - UK_SACs_with_Marine_Components_WGS84
 - UK_OffshoreMPAs_WGS84
 - EMODnet_2022_bathymetry
 - ICES_2023_VME_DataSet_2023125_Points
 - NEAFC_VMEMEASURE_OTHER
 - Land borders
 - Coastline
 - Source data
 - Basemap

Light brown shading shows C-squares overlapping 400-800m water depth. Yellow boxes indicate low probability VME occurrence. Orange boxes show medium probability VME occurrence. Red boxes show high probability. Blue boxes indicate presence of VME Habitat.

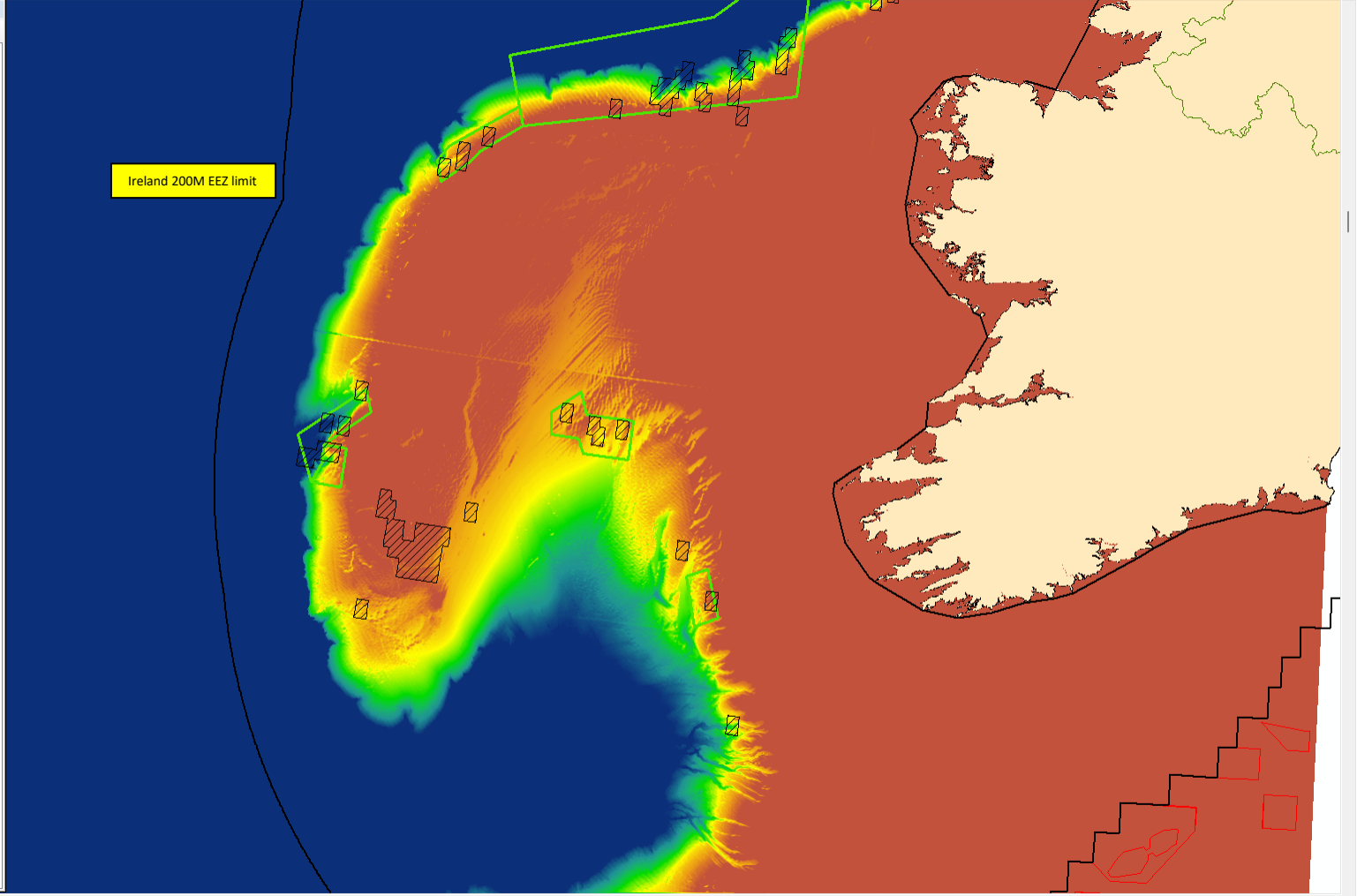
Green boxes are SACs (Ireland). Hatched areas are EU closures, NEAFC VME closures (beyond 200M) and other specific fisheries closures (e.g. Haddock Box).

Fishing with bottom trawls at a depth below 800m is prohibited. Regulation (EU) 2016/2336

Rockall Bank with EMODnet bathymetry background

Table Of Contents

- Layers
 - World_EEZ
 - World_12NM
 - EU_Closures_as_of_September_2022
 - ICES_2024_VME_Shapefile_scC
 - ICES_2023_VME_Weighting_Algorithm_VME_Habitat
 - ICES_2023_VME_Weighting_Algorithm_High
 - ICES_2023_VME_Weighting_Algorithm_Medium
 - ICES_2023_VME_Weighting_Algorithm_Low
 - NEAFC_Rockall_Bank_Haddock_Box
 - NEAFC_VMEMEASURE_VME
 - NEAFC_VMEMEASURE_BTM_FISH
 - NPWS_SAC_Offshore_WGS84_2022_11
 - C-sqs_overlapping_400-800m_depth
 - MCZ_Natural_England_and_JNCC
 - UK_SACs_with_Marine_Components_WGS84
 - UK_OffshoreMPAs_WGS84
 - EMODnet_2022_bathymetry
 - ICES_2023_VME_DataSet_2023125_Points
 - NEAFC_VMEMEASURE_OTHER
 - Land borders
 - Coastline
 - Source data
 - Basemap



Green boxes are SACs (Ireland).
Hatched areas are EU closures.

Porcupine Bank with EMODnet bathymetry background

Table Of Contents

- Layers
- World_EEZ
- World_12NM
- EU_Closures_as_of_September_2022
- ICES_2024_VME_Shapefile_scC
- ICES_2023_VME_Weighting_Algorithm_VME_Habitat
- ICES_2023_VME_Weighting_Algorithm_High
- ICES_2023_VME_Weighting_Algorithm_Medium
- ICES_2023_VME_Weighting_Algorithm_Low
- NEAFC_Rockall_Bank_Haddock_Box
- NEAFC_VMEMEASURE_VME
- NEAFC_VMEMEASURE_BTM_FISH
- NPWS_SAC_Offshore_WGS84_2022_11
- C-sqs_overlapping_400-800m_depth
- MCZ_Natural_England_and_JNCC
- UK_SACs_with_Marine_Components_WGS84
- UK_OffshoreMPAs_WGS84
- EMODnet_2022_bathymetry
- ICES_2023_VME_DataSet_2023125_Points
- NEAFC_VMEMEASURE_OTHER
- Land borders
- Coastline
- Source data
- Basemap

Ireland 200M EEZ limit

Fishing with bottom trawls at a depth below 800m is prohibited. Regulation (EU) 2016/2336

Fishing with bottom trawls at a depth below 800m is prohibited. Regulation (EU) 2016/2336

Light brown shading shows C-squares overlapping 400-800m water depth. Yellow boxes indicate low probability VME occurrence. Orange boxes show medium probability VME occurrence. Red boxes show high probability. Blue boxes indicate presence of VME Habitat.

Green boxes are SACs (Ireland). Hatched areas are EU closures.

