

Rockall Bank and Porcupine Bank MPAs and VMEs

Peter Croker, The M Horizon (UK) Limited, December 2023

References

ICES (2023) Advice on fishing opportunities, catch, and effort: Ecoregions in the Northeast Atlantic and adjacent seas. Published 02 October 2023.

ICES (2023) Advice on areas where Vulnerable Marine Ecosystems (VMEs) are known to occur or are likely to occur in EU waters. Published 18 April 2023.

- Layers**
- World_12NM
 - World_EEZ
 - EU_Closures_as_of_September_2022
 - ICES_VME_Weighting_Algorithm_VME_Habitat
 - ICES_VME_Weighting_Algorithm_High
 - ICES_VME_Weighting_Algorithm_Medium
 - ICES_VME_Weighting_Algorithm_Low
 - Rockall_Bank_Haddock_Box
 - NEAFC VME Closures
 - NEAFC VME Bottom fishing areas
 - NPWS_SAC_Offshore_WGS84_2022_11
 - C-sqs_overlapping_400-800m_depth
 - Land borders
 - Coastline
 - MCZ_Natural_England_and_JNCC
 - UK_SACs_with_Marine_Components_WGS84
 - UK_OffshoreMPAs_WGS84
 - EMODnet_2022_bathymetry
 - ICES_VME_Scenarios_A-E
 - ICES_VME_DataSet_2023125_Points
 - NEAFC VME Other
 - EEZ_Land_v3_202030
 - Source data
 - Basemap



Ireland 200M EEZ limit

Green boxes are SACs (Ireland).
Hatched areas are EU closures, NEAFC VME closures (beyond 200M) and other specific fisheries closures (e.g. Haddock Box).

Overview map West of Ireland

Table Of Contents

Layers	
<input checked="" type="checkbox"/>	World_12NM
<input checked="" type="checkbox"/>	World_EEZ
<input checked="" type="checkbox"/>	EU_Closures_as_of_September_2022
<input checked="" type="checkbox"/>	ICES_VME_Weighting_Algorithm_VME_Habitat
<input checked="" type="checkbox"/>	ICES_VME_Weighting_Algorithm_High
<input checked="" type="checkbox"/>	ICES_VME_Weighting_Algorithm_Medium
<input checked="" type="checkbox"/>	ICES_VME_Weighting_Algorithm_Low
<input checked="" type="checkbox"/>	Rockall_Bank_Haddock_Box
<input checked="" type="checkbox"/>	NEAFC VME Closures
<input checked="" type="checkbox"/>	NEAFC VME Bottom fishing areas
<input checked="" type="checkbox"/>	NPWS_SAC_Offshore_WGS84_2022_11
<input checked="" type="checkbox"/>	C-sqs_overlapping_400-800m_depth
<input checked="" type="checkbox"/>	Land borders
<input checked="" type="checkbox"/>	Coastline
<input checked="" type="checkbox"/>	MCZ_Natural_England_and_JNCC
<input checked="" type="checkbox"/>	UK_SACs_with_Marine_Components_WGS84
<input checked="" type="checkbox"/>	UK_OffshoreMPAs_WGS84
<input type="checkbox"/>	EMODnet_2022_bathymetry
<input type="checkbox"/>	ICES_VME_Scenarios_A-E
<input type="checkbox"/>	ICES_VME_DataSet_2023125_Points
<input type="checkbox"/>	NEAFC VME Other
<input type="checkbox"/>	EEZ_Land_v3_202030
<input type="checkbox"/>	Source data
<input type="checkbox"/>	Basemap

Light brown shading shows C-squares overlapping 400-800m water depth. Yellow boxes indicate low probability VME occurrence. Orange boxes show medium probability VME occurrence. Red boxes show high probability. Blue boxes indicate presence of VME Habitat.

Green boxes are SACs (Ireland). Hatched areas are EU closures, NEAFC VME closures (beyond 200M) and other specific fisheries closures (e.g. Haddock Box).

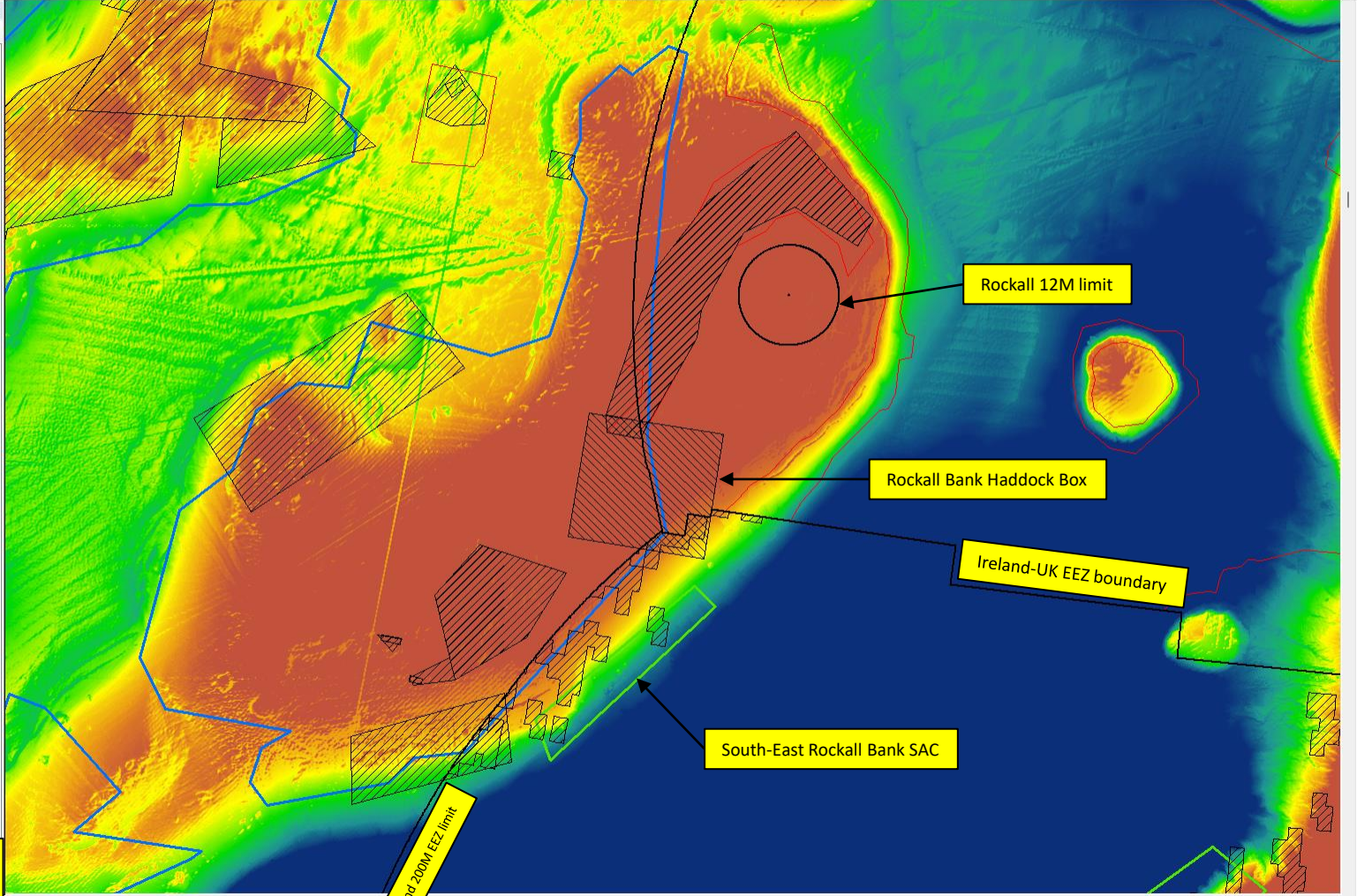
Ireland 200M EEZ limit

Bottom trawling in water depths greater than 800m prohibited

Bottom trawling in water depths greater than 800m prohibited

Table Of Contents

- Layers
 - World_EEZ
 - Land borders
 - World_12NM
 - EU_Closures_as_of_September_2022
 - ICES_VME_Weighting_Algorithm_VME_Habitat
 - ICES_VME_Weighting_Algorithm_High
 - ICES_VME_Weighting_Algorithm_Medium
 - ICES_VME_Weighting_Algorithm_Low
 - Rockall_Bank_Haddock_Box
 - NEAFC_VME_Closures
 - NEAFC_VME_Bottom_fishing_areas
 - NPWS_SAC_Offshore_WGS84_2022_11
 - C-sqs_overlapping_400-800m_depth
 - Coastline
 - MCZ_Natural_England_and_JNCC
 - UK_SACs_with_Marine_Components_WGS84
 - UK_OffshoreMPAs_WGS84
 - EMODnet_2022_bathymetry
 - ICES_VME_DataSet_2023125_Points
 - NEAFC_VME_Other
 - Land borders
 - Coastline
 - Source data
 - Basemap



Green boxes are SACs (Ireland).
Hatched areas are EU closures, NEAFC VME closures (beyond 200M) and other specific fisheries closures (e.g. Haddock Box).

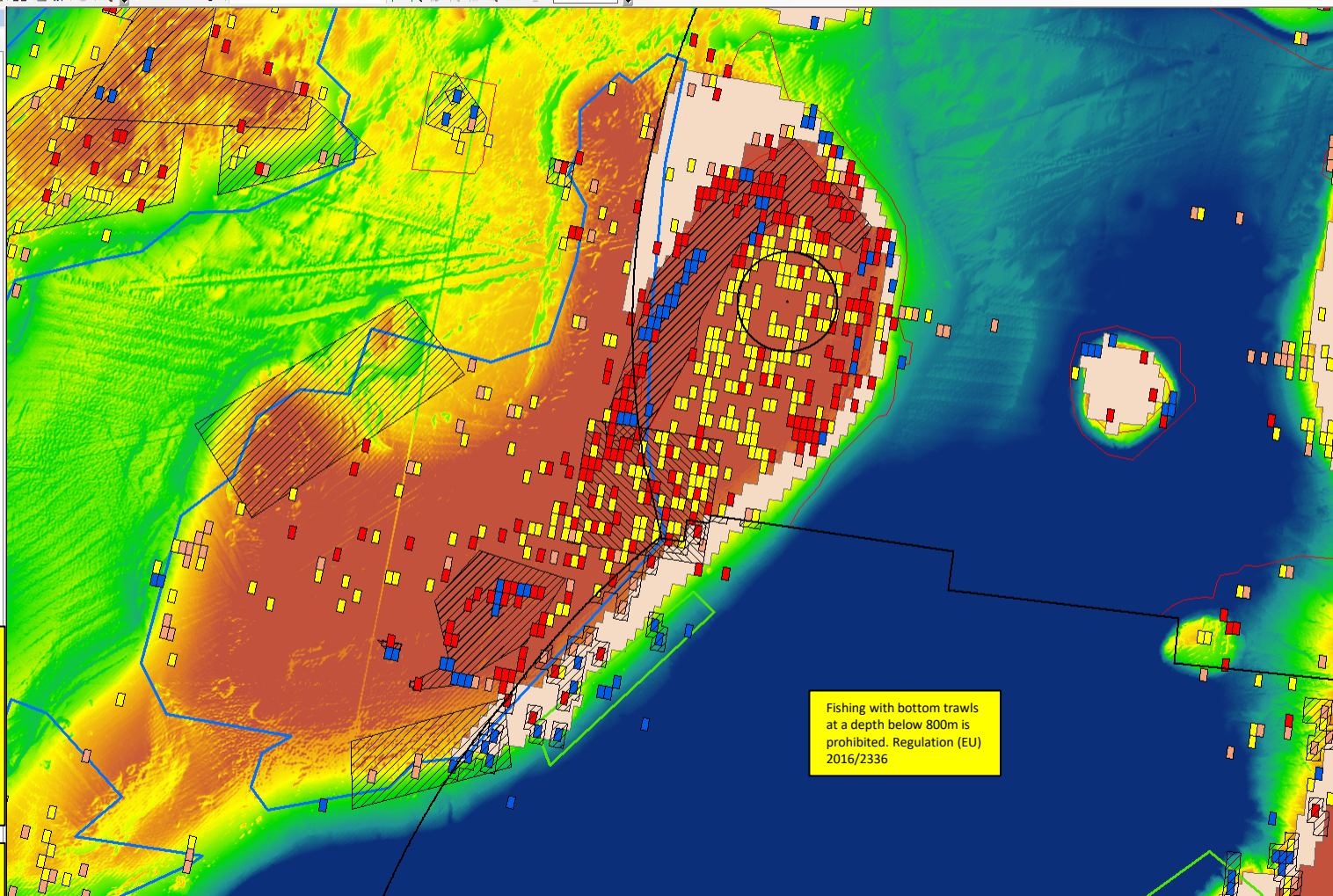
Rockall Bank with EMODnet bathymetry background

Table Of Contents

- Layers**
- World_EEZ
 - Land borders
 - World_12NM
 - EU_Closures_as_of_September_2022
 - ICES_VME_Weighting_Algorithm_VME_Habitat
 - ICES_VME_Weighting_Algorithm_High
 - ICES_VME_Weighting_Algorithm_Medium
 - ICES_VME_Weighting_Algorithm_Low
 - Rockall_Bank_Haddock_Box
 - NEAFC VME Closures
 - NEAFC VME Bottom fishing areas
 - NPWS_SAC_Offshore_WGS84_2022_11
 - C-sqs_overlapping_400-800m_depth
 - Coastline
 - MCZ_Natural_England_and_JNCC
 - UK_SACs_with_Marine_Components_WGS84
 - UK_OffshoreMPAs_WGS84
 - EMODnet_2022_bathymetry
 - ICES_VME_DataSet_2023125_Points
 - NEAFC VME Other
 - Land borders
 - Coastline
 - Source data
 - Basemap

Light brown shading shows C-squares overlapping 400-800m water depth. Yellow boxes indicate low probability VME occurrence. Orange boxes show medium probability VME occurrence. Red boxes show high probability. Blue boxes indicate presence of VME Habitat.

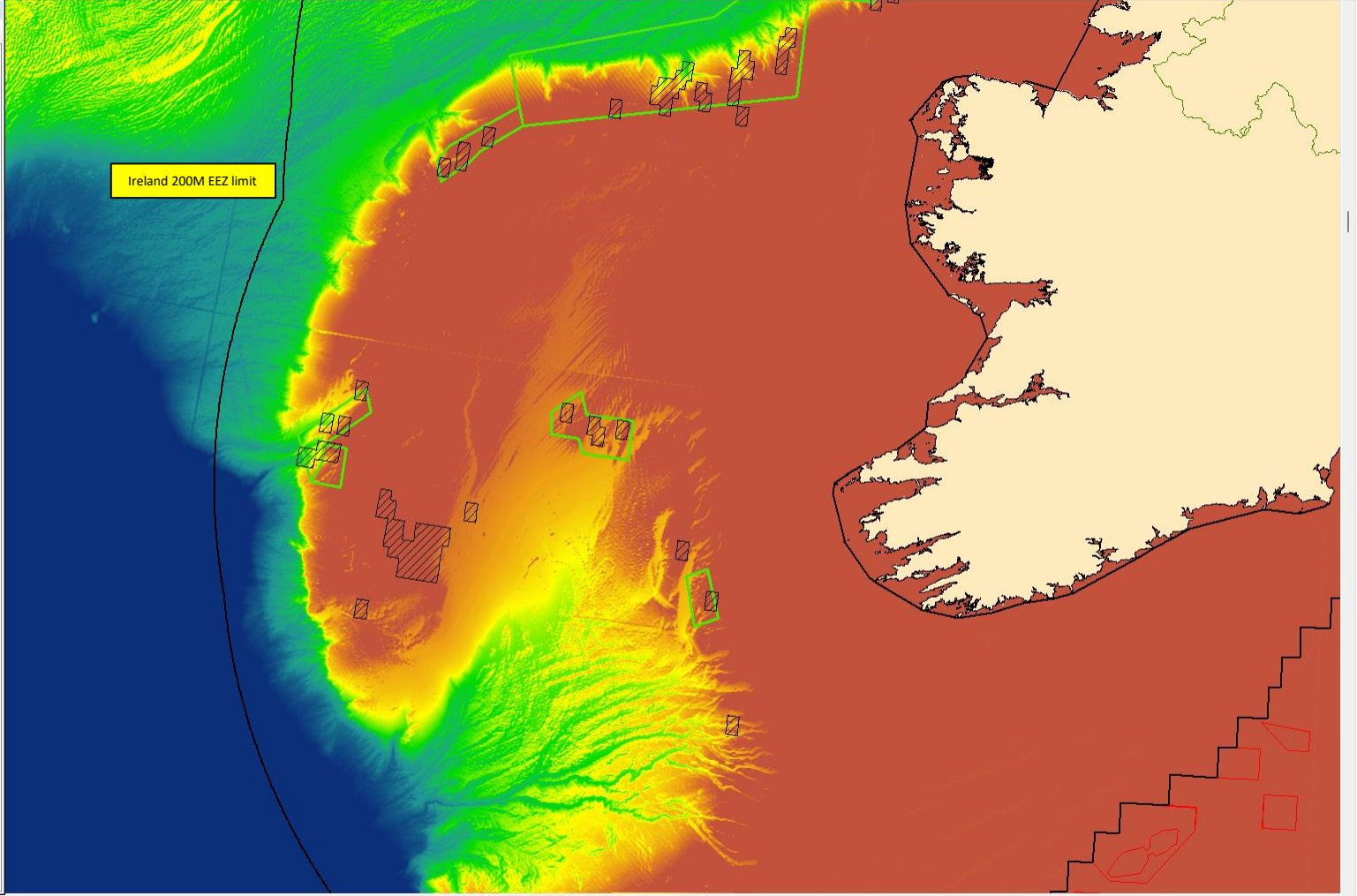
Green boxes are SACs (Ireland). Hatched areas are EU closures, NEAFC VME closures (beyond 200M) and other specific fisheries closures (e.g. Haddock Box).



Fishing with bottom trawls at a depth below 800m is prohibited. Regulation (EU) 2016/2336

Table Of Contents

- Layers
 - World_EEZ
 - World_12NM
 - EU_Closures_as_of_September_2022
 - ICES_VME_Weighting_Algorithm_VME_Habitat
 - ICES_VME_Weighting_Algorithm_High
 - ICES_VME_Weighting_Algorithm_Medium
 - ICES_VME_Weighting_Algorithm_Low
 - Rockall_Bank_Haddock_Box
 - NEAFC_VME_Closures
 - NEAFC_VME_Bottom_fishing_areas
 - NPWS_SAC_Offshore_WGS84_2022_11
 - C-sqs_overlapping_400-800m_depth
 - Land_borders
 - Coastline
 - MCZ_Natural_England_and_JNCC
 - UK_SACs_with_Marine_Components_WGS84
 - UK_OffshoreMPAs_WGS84
 - EMODnet_2022_bathymetry
 - Rockall_Bank_Haddock_Box
 - ICES_VME_DataSet_2023125_Points
 - NEAFC_VME_Closures
 - NEAFC_VME_Bottom_fishing_areas
 - NEAFC_VME_Other
 - Source_data
 - Basemap



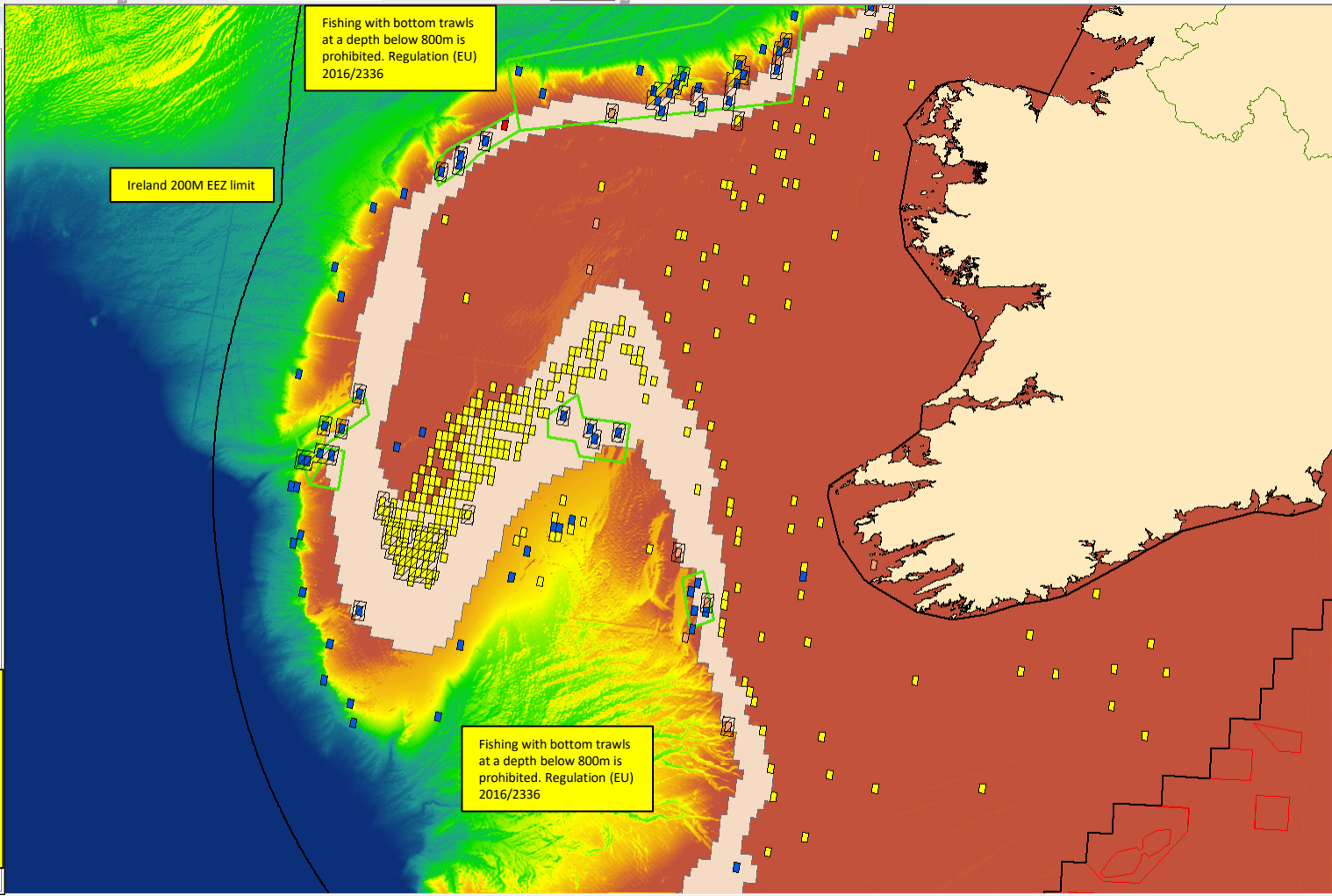
Green boxes are SACs (Ireland).
Hatched areas are EU closures.

Table Of Contents

- Layers**
- World_EEZ
 - World_12NM
 - EU_Closures_as_of_September_2022
 - ICES_VME_Weighting_Algorithm_VME_Habitat
 - ICES_VME_Weighting_Algorithm_High
 - ICES_VME_Weighting_Algorithm_Medium
 - ICES_VME_Weighting_Algorithm_Low
 - Rockall_Bank_Haddock_Box
 - NEAFC_VME_Closures
 - NEAFC_VME_Bottom_fishing_areas
 - NPWS_SAC_Offshore_WGS84_2022_11
 - C-sqs_overlapping_400-800m_depth
 - Land_borders
 - Coastline
 - MCZ_Natural_England_and_JNCC
 - UK_SACs_with_Marine_Components_WGS84
 - UK_OffshoreMPAs_WGS84
 - EMODnet_2022_bathymetry
 - Rockall_Bank_Haddock_Box
 - ICES_VME_DataSet_2023125_Points
 - NEAFC_VME_Closures
 - NEAFC_VME_Bottom_fishing_areas
 - NEAFC_VME_Other
 - Source_data
 - Basemap

Light brown shading shows C-squares overlapping 400-800m water depth. Yellow boxes indicate low probability VME occurrence. Orange boxes show medium probability VME occurrence. Red boxes show high probability. Blue boxes indicate presence of VME Habitat.

Green boxes are SACs (Ireland). Hatched areas are EU closures.



Porcupine Bank with EMODnet bathymetry background